

Y:\P-2014\McDonald's\P-McD10651-Rev A.dwg, 0-COV, 9/25/2014 11:50:45 AM, gmund

# GENERAL NOTES

- ALL DESIGNS AND PLANS REPRESENTED ON THESE DRAWINGS ARE OWNED BY JBI AND WERE CREATED FOR USE ON THE SPECIFIED PROJECT. NONE OF THE IDEAS, DESIGNS, ARRANGEMENTS OR PLANS REPRESENTED BY THESE DRAWINGS SHALL BE USED BY OR DISCLOSED TO ANY PERSON, FIRM OR CORPORATION FOR ANY PURPOSE WHATSOEVER WITHOUT WRITTEN PERMISSION FROM JBI
- WRITTEN DIMENSIONS SHALL TAKE PRECEDENCE OVER SCALED DIMENSIONS. ALL DIMENSIONS INDICATED ON THESE PLANS ARE FROM INSIDE WALL SURFACES. DO NOT SCALE OFF OF THESE PLANS - CONTACT JBI TO VERIFY ANY QUESTIONABLE DIMENSIONS.
- REFER TO ARCHITECTURAL AND/OR ENGINEERING DRAWINGS FOR COMPLETE AND ACCURATE DIMENSIONS OF BUILDING STRUCTURE.
- DO NOT USE FOR CONSTRUCTION UNLESS THE DRAWING HAS BEEN APPROVED BY THE CUSTOMER AND MARKED "APPROVED FOR CONSTRUCTION".
- DUE TO UNFORESEEN CHANGES THAT OCCUR DURING CONSTRUCTION, CONSTRUCTION MANAGER, AND/OR G.C. MUST VERIFY ALL INTERIOR BUILDING DIMENSIONS, EQUIPMENT, FURNITURE PLACEMENT, UTILITY LOCATIONS AND CONDITIONS AT THE JOB SITE AND NOTIFY JBI OF ANY DISCREPANCIES PRIOR TO CONSTRUCTION, MANUFACTURING, CORE DRILLING OR INSTALLATION.
- JBI MUST BE COPIED ON ANY BUILDING OR ARCHITECTURAL DRAWING CHANGES.
- JBI SHALL NOT BE RESPONSIBLE FOR UNDISCLOSED OR UNSEEN SITE CONDITIONS.
- CORE DRILL EQUIPMENT REQUIRES A MINIMUM 5" THICK CONCRETE SLAB. G.C. TO FINISH CORE DRILL HOLES WITH 1/4" GROUT TO MATCH FLOOR TILE GROUT.
- JBI ASSUMES THAT THERE IS NO INTERFERENCE IN SLAB FOR CORE DRILLED HOLES. ALL ELECTRICAL CONDUITS, WATER LINES, POST TENSION CABLES, ETC. LOCATED IN THE SLAB MUST BE IDENTIFIED BY THE ARCHITECT AND/ OR GC AND NOTED AND ACKNOWLEDGED ON JBI DESIGN DOCUMENTS; COST FOR ALL REPAIRS RELATED TO HIDDEN CONDITIONS ARE THE RESPONSIBILITY OF THE CUSTOMER.
- FOR REMODEL INSTANCES JBI ASSUMES THAT ALL EXISTING STEEL WAS PROPERLY REMOVED IN ITS ENTIRETY AND ALL HOLES FILLED
- JBI PROVIDES RECOMMENDATIONS FOR OWNER/G.C. SUPPLIED ITEMS. IT IS THE RESPONSIBILITY OF THE OWNER/G.C. TO APPROVE AND OBTAIN SPECIFIED PRODUCTS. THE OWNER'S RESPONSIBILITIES INCLUDE ALL CONTRACTS WITH THE GENERAL & SUB CONTRACTORS AND THEIR COMPLIANCE WITH THESE SPECIFICATIONS.
- JBI DOES NOT WARRANT RECOMMENDED MATERIALS SUPPLIED BY THE OWNER/ G.C. THE WARRANTY IS PROVIDED BY THE SELLER OR MANUFACTURER OF THE MATERIAL.
- IN RARE INSTANCES, THE OWER/G.C. MAY BE REQUIRED TO REMOVE A WINDOW IN ORDER TO GAIN FURNITURE ACCESS INTO THE DINING AREA.

# FINAL APPROVAL TERMS

- PLEASE SIGN THIS COVER PAGE TO INDICATE ACCEPTANCE OF PROJECT AS SHOWN IN DRAWING PACKAGE.
- A SIGNED SALES ORDER SIGNIFIES AN OBLIGATION TO PROCEED WITH THE EXECUTION OF THE SPECIFIED PROJECT.
- A DEPOSIT IS REQUIRED TO START PRODUCTION.
- CHANGE ORDERS ARE SUBJECT TO A MINIMUM \$500 PROCESSING FEE.
- ALL ITEMS PRODUCED FOR YOUR PROJECT ARE CUSTOM MADE TO FIT THE BUILDING BASED ON INFORMATION GATHERED DURING THE INITIAL JOB SITE SURVEY OR THE PROVIDED ARCHITECTURAL DRAWINGS. SUCH PRODUCTS MAY NOT BE RETURNED OR EXCHANGED. JBI MUST BE NOTIFIED OF ANY BUILDING OR ARCHITECTURAL DRAWING CHANGES IN ORDER TO ENSURE PROPER PRODUCT FIT.

PLEASE SEE FINAL APPROVAL TERMS

ON SITE DATE	---
CUSTOMER SIGNATURE DUE DATE	---

HELD ITEMS WILL NOT BE PRODUCED UNTIL ADDITIONAL INFORMATION IS PROVIDED.

SHEET	ITEM	DESCRIPTION	REQUIRED INFORMATION
---	---	---	---
---	---	---	---
---	---	---	---
---	---	---	---

HELD ITEM APPROVAL DUE DATE	-
-----------------------------	---

Customer Name: \_\_\_\_\_

Customer Signature/Date: \_\_\_\_\_

## PROJECT INFORMATION:

PROJECT NO.....: P-MCD10651

NAT'L STORE NO.: 36839

BUILDING TYPE....:

CUSTOMER.....: FRED AND CHAD TILLMAN

ADDRESS.....: WINCHESTER RD.

CITY / STATE.....: MEMPHIS, TENNESSEE

## JBI CONTACTS:

SALES CONSULTANT:

LORI HEIST  
678-793-5315

PROJECT COORDINATOR:

ELEANOR DE LEON  
310-667-5642

LEAD DESIGNER

JESSIE ALMAZAN  
310-667-5626



2650 El Presidio Street  
Long Beach, CA 90810  
T 1 310 537 8200  
F 1 310 604 3827  
www.jbi-interiors.com

PRELIMINARY NOT FOR CONSTRUCTION

\*BID SET / BRAND REVIEW SUBMITTAL SET

BRAND REVIEW  
APPROVAL PENDING

CURRENT REVISION LETTER **A** DATE **09-24-14**

## THIS SET INCLUDES:

- 0-COVER SHEET
- 1a-SEATING LAYOUT PLAN
- 1b-CORE DRILL PLAN
- 2-SHADED PLAN
- 3-FINISH PLAN
- 4-CEILING PLAN
- 5a-ELEVATIONS
- 5b-ELEVATIONS
- 5c-ELEVATIONS
- 5d-ELEVATIONS
- 5e-ELEVATIONS
- 5f-ELEVATIONS
- 5g-ELEVATIONS
- 6-STANDARD DETAILS
- 7a-GRAPHIC CROP GUIDE
- 7b-GRAPHIC CROP GUIDE
- 8a-JBI LEGEND
- 8b-JBI LEGEND
- 8c-JBI LEGEND
- 8d-JBI LEGEND
- 9a-GC LEGEND
- 9b-GC LEGEND

## REVISION HISTORY:

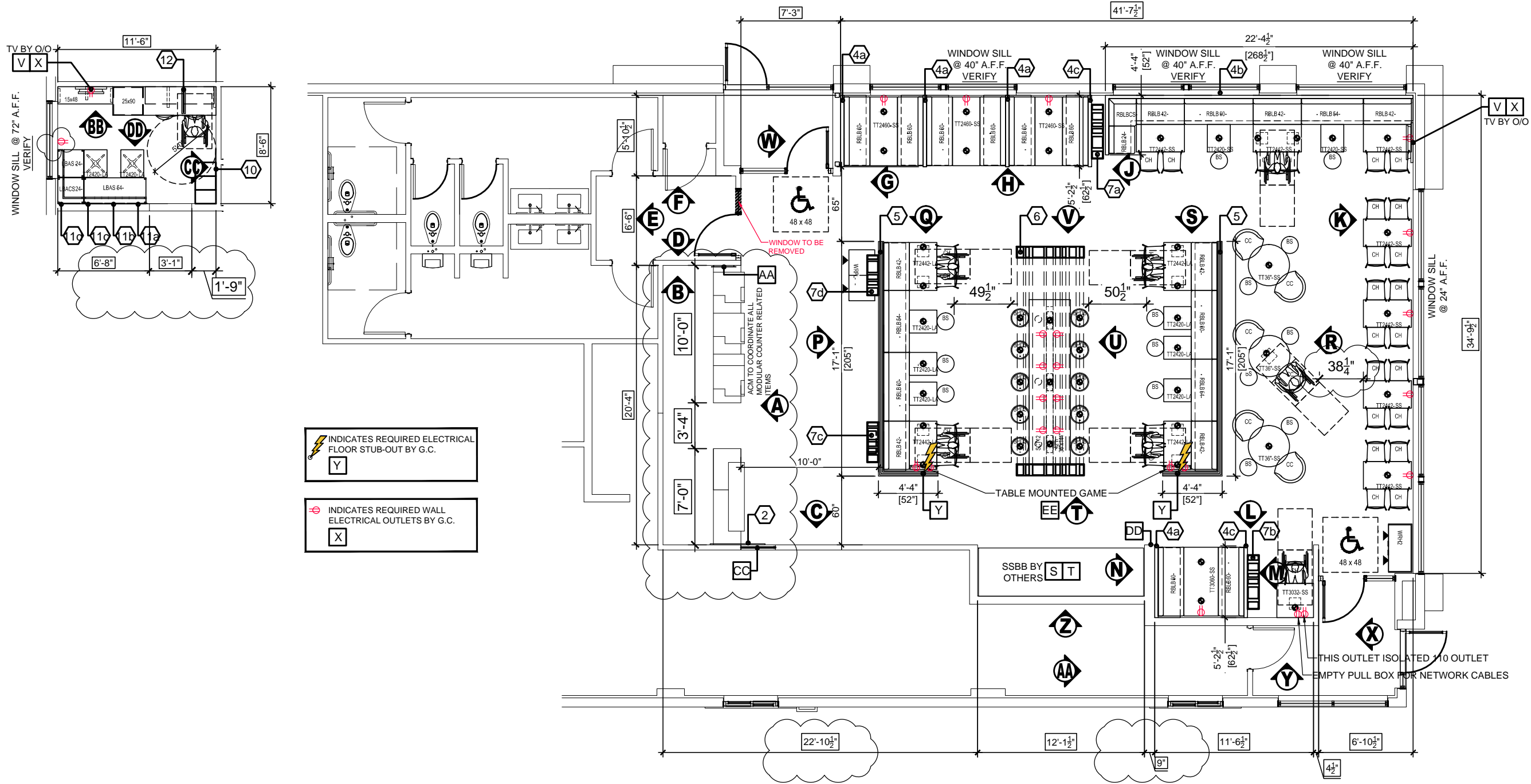
A	09-24-14	gm
A	09-24-14	gm
-	To Follow	-
-	08-26-14	gm
A	09-24-14	gm
A	09-24-14	gm
A	09-24-14	gm
-	08-26-14	gm
-	08-26-14	gm
A	09-24-14	gm
A	09-24-14	gm
-	08-26-14	gm
-	To Follow	-
-	To Follow	-
-	08-26-14	gm
-	08-26-14	gm
A	09-24-14	gm
-	08-26-14	gm
-	08-26-14	gm
A	09-24-14	gm

SET DRAWN / REVISED FROM	DATE RECEIVED:	OBTAINED FROM:
BUILDING LAYOUT DRAWN FROM ARCHITECTURAL PLANS	07-29-14	ACCRUENT
BUILDING LAYOUT DRAWN FROM ARCHITECTURAL PLANS	09-10-14	ACCRUENT
---	-	-
---	-	-



Y:\P-2014\McDonald's\P-McD10651-Rev A.dwg, 1a, 9/24/2014 6:22:42 PM, gmund

DINING CAPACITY:	107
ADA SEATS REQ'D.:	6
ADA SEATS PROVIDED:	6
ALL BOXED DIMENSIONS ARE TO BE FIELD VERIFIED	
SERVICE COUNTER TO BE AT 34" AFF (INCLUDES TOP) TO MEET ADA REQUIREMENTS	



2650 El Presidio Street  
Long Beach, CA 90810  
T 1 310 537 8200  
F 1 310 604 3827  
www.jbi-interiors.com

REVISIONS

LTR	DATE	BY	CHK'D
A	09-24-14	gm	
REVISED PER WRF DATED 09-11-14			

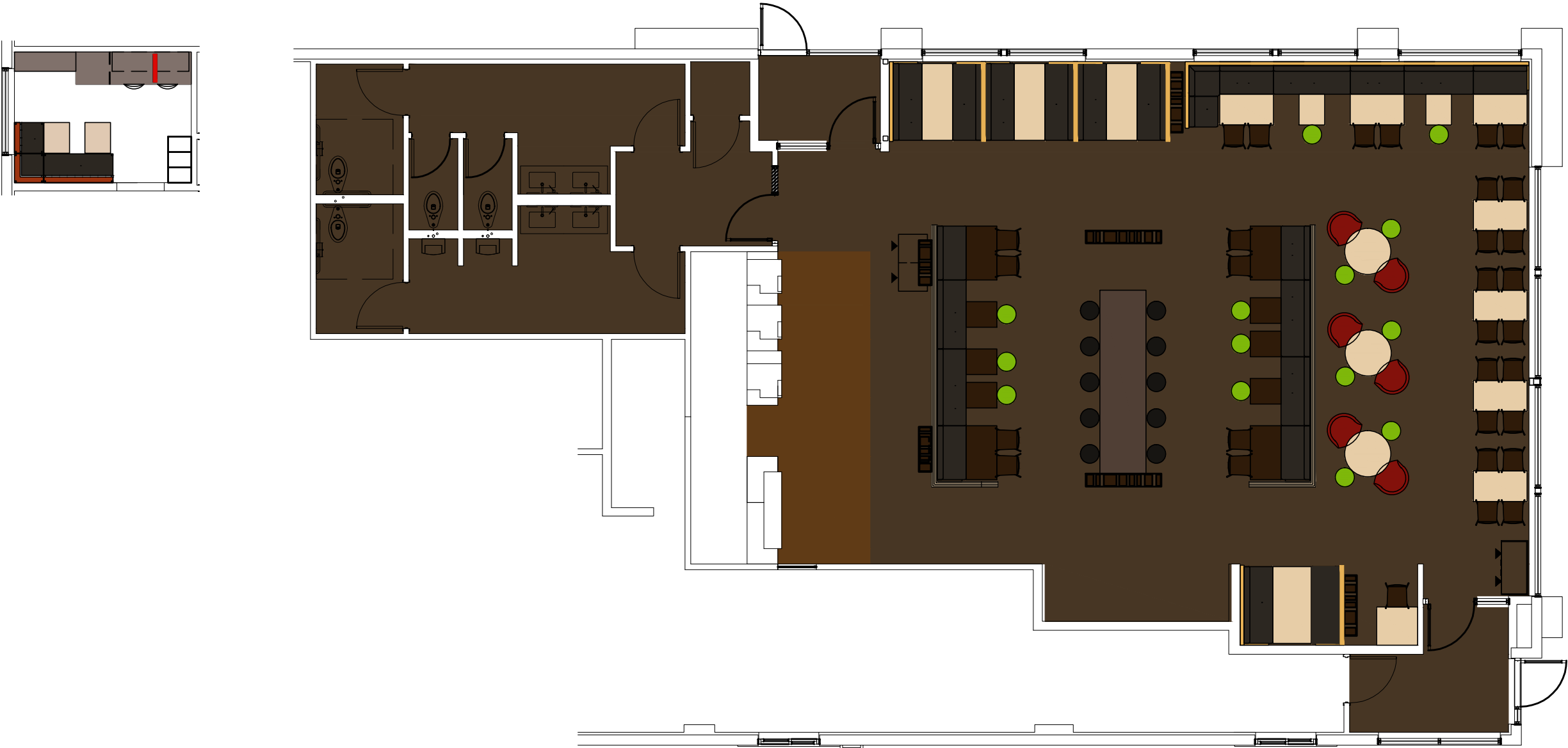


BUILDING TYPE: -  
STORE NUMBER: 36839  
WINCHESTER  
ROAD  
MEMPHIS,  
TENNESSEE

SEATING LAYOUT PLAN

DATE: 08-26-14	
SCALE: 1/8" = 1'-0"	
DESIGNER: MS	CHK'D:
DRAWING NUMBER	PAGE
P-McD10651	1a

Y:\P-2014\McDonald's\P-McD10651\Design\2 Rev A\IP-McD10651-Rev A.dwg, 2, 9/24/2014 6:22:46 PM, gmund



2650 El Presidio Street  
Long Beach, CA 90810  
T 1 310 537 8200  
F 1 310 604 3827  
www.jbi-interiors.com

REVISIONS

LTR	DATE	BY	CHK'D
-----	------	----	-------

--	--	--	--

--	--	--	--

--	--	--	--

--	--	--	--

--	--	--	--

--	--	--	--

--	--	--	--

--	--	--	--

--	--	--	--

--	--	--	--

--	--	--	--

--	--	--	--

--	--	--	--

--	--	--	--

--	--	--	--

--	--	--	--

--	--	--	--

--	--	--	--

--	--	--	--

--	--	--	--

--	--	--	--

--	--	--	--

--	--	--	--

--	--	--	--

--	--	--	--

--	--	--	--

--	--	--	--

--	--	--	--

--	--	--	--

--	--	--	--

--	--	--	--

--	--	--	--

--	--	--	--

--	--	--	--

--	--	--	--

--	--	--	--

--	--	--	--

--	--	--	--

--	--	--	--

--	--	--	--

--	--	--	--

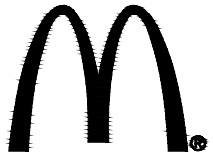
--	--	--	--

--	--	--	--

--	--	--	--

--	--	--	--

--	--	--	--



ALLEGRO VIVID  
CORE

BUILDING TYPE: -

STORE NUMBER: 36839

WINCHESTER  
ROAD  
MEMPHIS,  
TENNESSEE

SHADED PLAN

DATE: 08-26-14

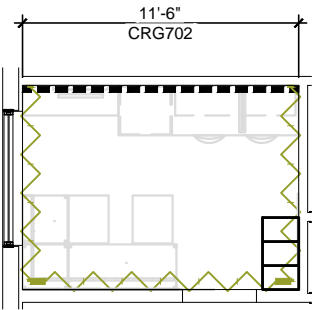
SCALE: 1/8"=1'-0"

DESIGNER: gm	CHK'D:
--------------	--------

DRAWING NUMBER	PAGE
----------------	------

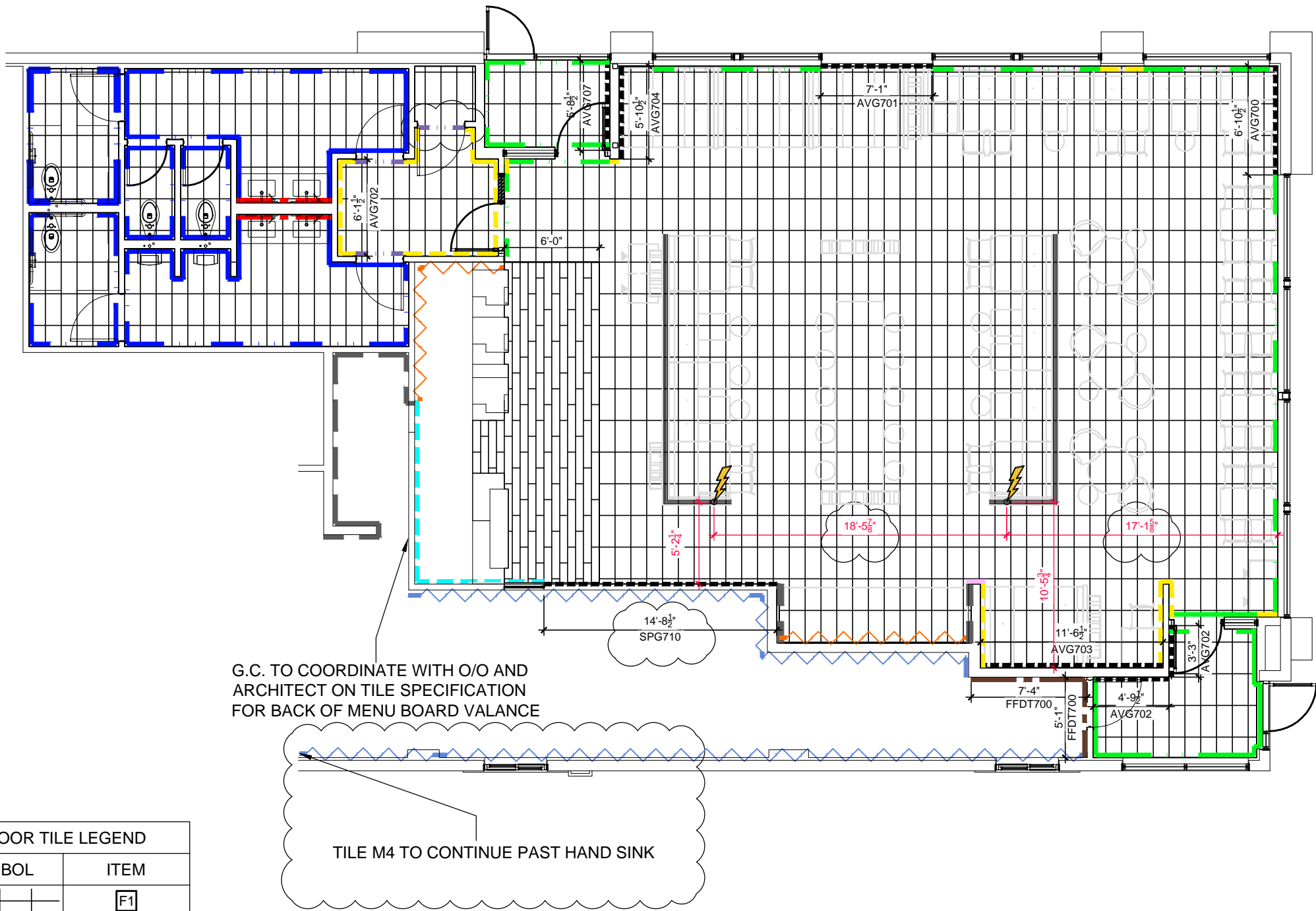
P-McD10651	2
------------	---

Y:\P-2014\McDonald's\P-McD10651\Design\2 Rev A\IP-McD10651-Rev A.dwg, 3, 9/24/2014 6:22:48 PM, gmund



WALL FINISH LEGEND	
SYMBOL	ITEM
	3a Z
	3b Z
	G1 J K1 L
	G2
	H
	K2
	M1
	M2
	M3
	M4
	M4 H
	N1
	N2
	DD

FLOOR TILE LEGEND	
SYMBOL	ITEM
	F1
	F2



G.C. TO COORDINATE WITH O/O AND ARCHITECT ON TILE SPECIFICATION FOR BACK OF MENU BOARD VALANCE

TILE M4 TO CONTINUE PAST HAND SINK

**BEFORE FINAL INSPECTION, REMOVE PROTECTIVE COVERINGS AND PERFORM FINAL CLEANING.**

**TILE CLEANER: DETERDEK, BY FILA SURFACE CARE PRODUCTS - NO SUBSTITUTIONS ALLOWED**  
**CAN BE ORDERED FROM EUROWEST, DAL TILE, OR DIRECT FROM MANUFACTURER: FILA/DETERDEK**  
**POST CONSTRUCTION CLEANING REQUIRED ON ALL INSTALLATIONS PRIOR TO RESTAURANT TURN OVER.**

**APPLY CLEANER PER MANUFACTURER'S WRITTEN INSTRUCTIONS.**  
**REFERENCE: 2013 McDONALD'S PROJECT MANUAL - SECTION 093000 TILING INTERIOR**



2650 El Presidio Street  
Long Beach, CA 90810  
T 1 310 537 8200  
F 1 310 604 3827  
www.jbi-interiors.com

## REVISIONS

LTR	DATE	BY	CHK'D
A	09-24-14	gm	
REVISED PER WRF DATED 09-11-14			



BUILDING TYPE: -  
STORE NUMBER: 36839

WINCHESTER  
ROAD  
MEMPHIS,  
TENNESSEE

## FINISH PLAN

DATE: 08-26-14	
SCALE: 1/8"=1'-0"	
DESIGNER: gm	CHK'D:
DRAWING NUMBER	PAGE
<b>P-McD10651</b>	<b>3</b>

LTR	DATE	BY	CHK'D
-----	------	----	-------

A	09-24-14	gm	
---	----------	----	--

REVISÉ PER WRF DATED 09-11-14



BUILDING TYPE: -

STORE NUMBER: 36839

WINCHESTER  
ROAD  
MEMPHIS,  
TENNESSEE

## CEILING PLAN

DATE: 08-26-14

SCALE: 1/8"=1'-0"

DESIGNER: gm

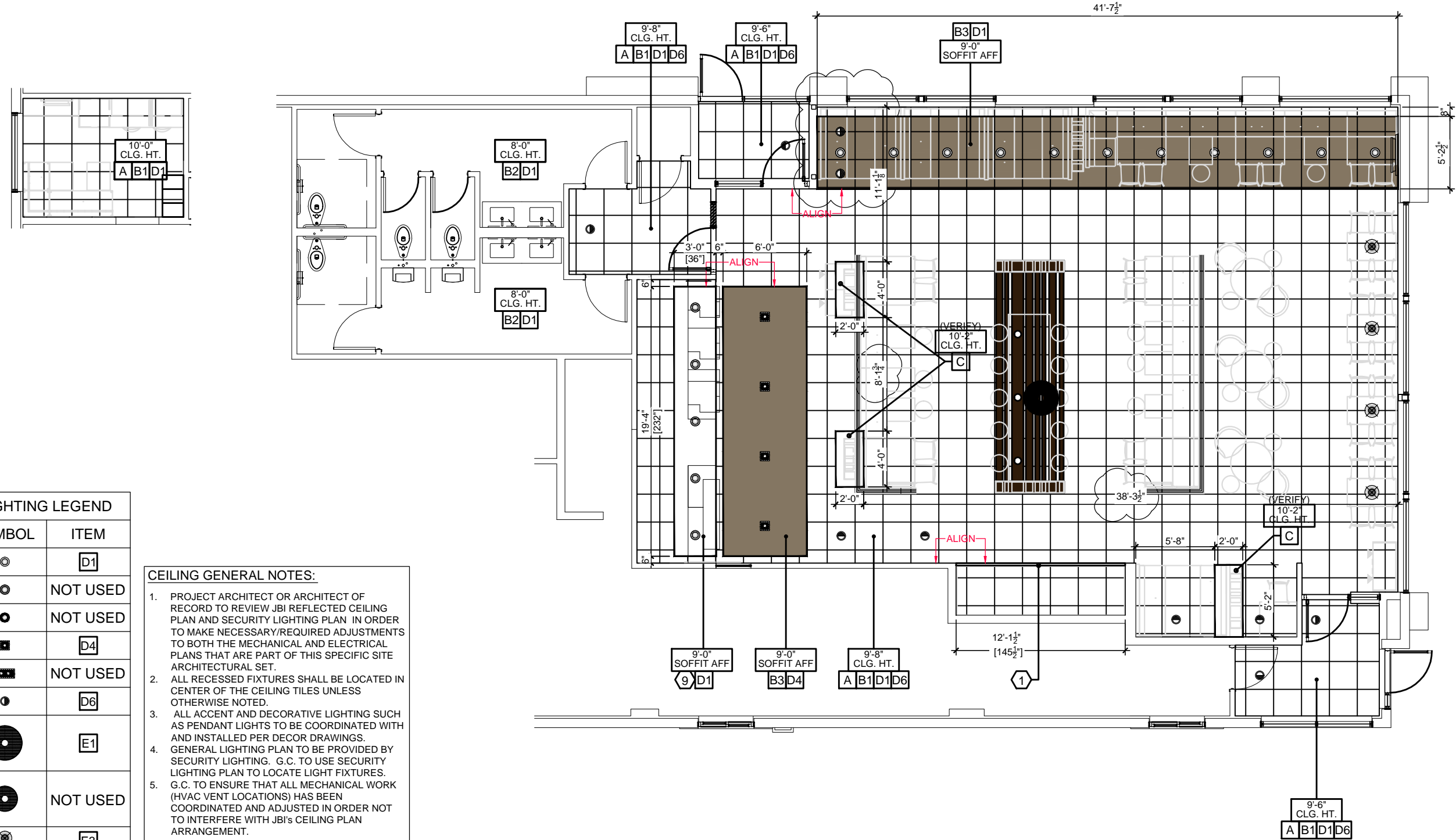
HK'D:

DRAWING NUMBER










PAGE

**P-McD10651**

4



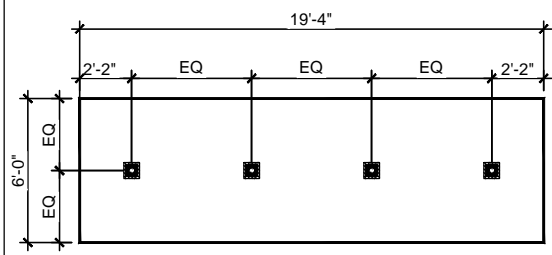
SYMBOL	ITEM
--------	------

	D1
	NOT USE
	NOT USE
	D4
	NOT USE
	D6
	E1
	NOT USE
	E3

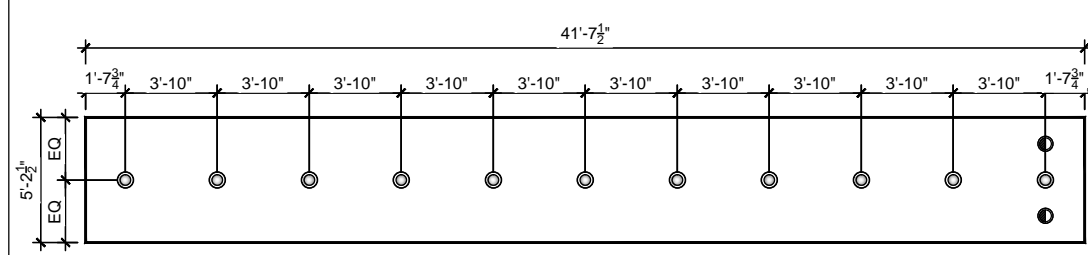
CEILING GENERAL NOTES:

1. PROJECT ARCHITECT OR ARCHITECT OF RECORD TO REVIEW JBI REFLECTED CEILING PLAN AND SECURITY LIGHTING PLAN IN ORDER TO MAKE NECESSARY/REQUIRED ADJUSTMENTS TO BOTH THE MECHANICAL AND ELECTRICAL PLANS THAT ARE PART OF THIS SPECIFIC SITE ARCHITECTURAL SET.
2. ALL RECESSED FIXTURES SHALL BE LOCATED IN CENTER OF THE CEILING TILES UNLESS OTHERWISE NOTED.
3. ALL ACCENT AND DECORATIVE LIGHTING SUCH AS PENDANT LIGHTS TO BE COORDINATED WITH AND INSTALLED PER DECOR DRAWINGS.
4. GENERAL LIGHTING PLAN TO BE PROVIDED BY SECURITY LIGHTING. G.C. TO USE SECURITY LIGHTING PLAN TO LOCATE LIGHT FIXTURES.
5. G.C. TO ENSURE THAT ALL MECHANICAL WORK (HVAC VENT LOCATIONS) HAS BEEN COORDINATED AND ADJUSTED IN ORDER NOT TO INTERFERE WITH JBI'S CEILING PLAN ARRANGEMENT.

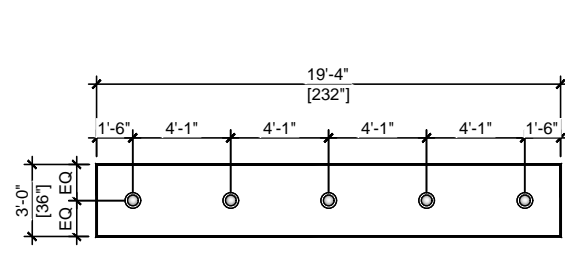
**B3D4 PAINTED SOFFIT DETAIL**



**B3D4 PAINTED SOFFIT DETAIL**

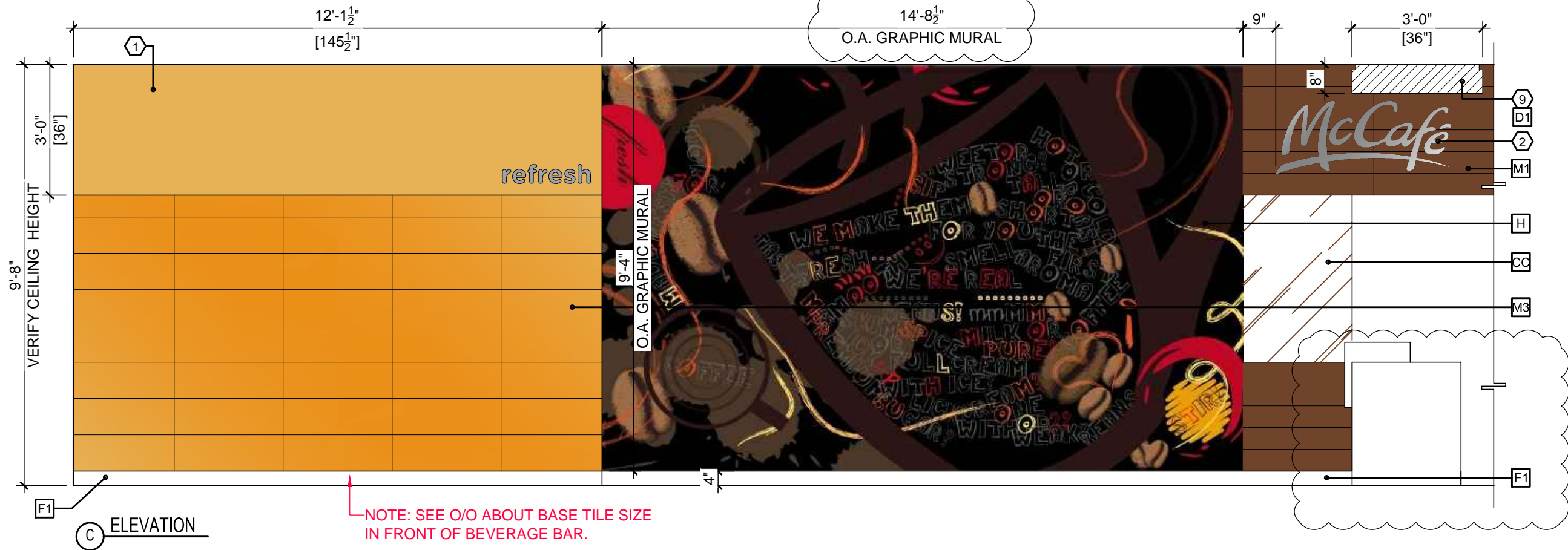
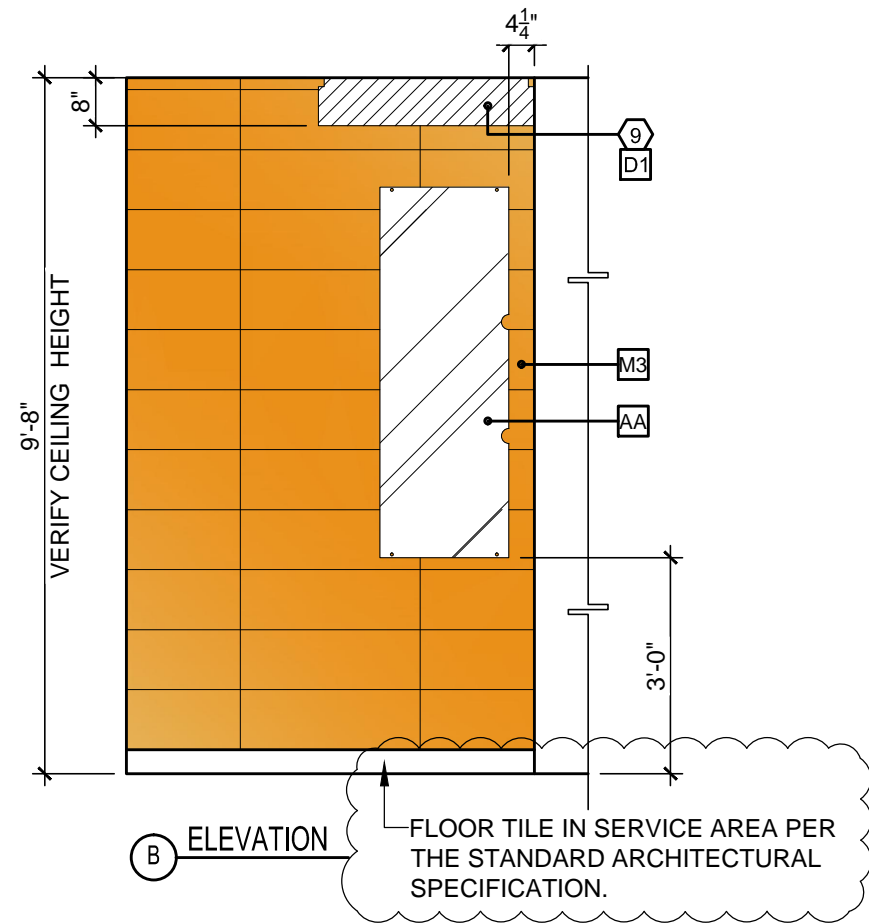
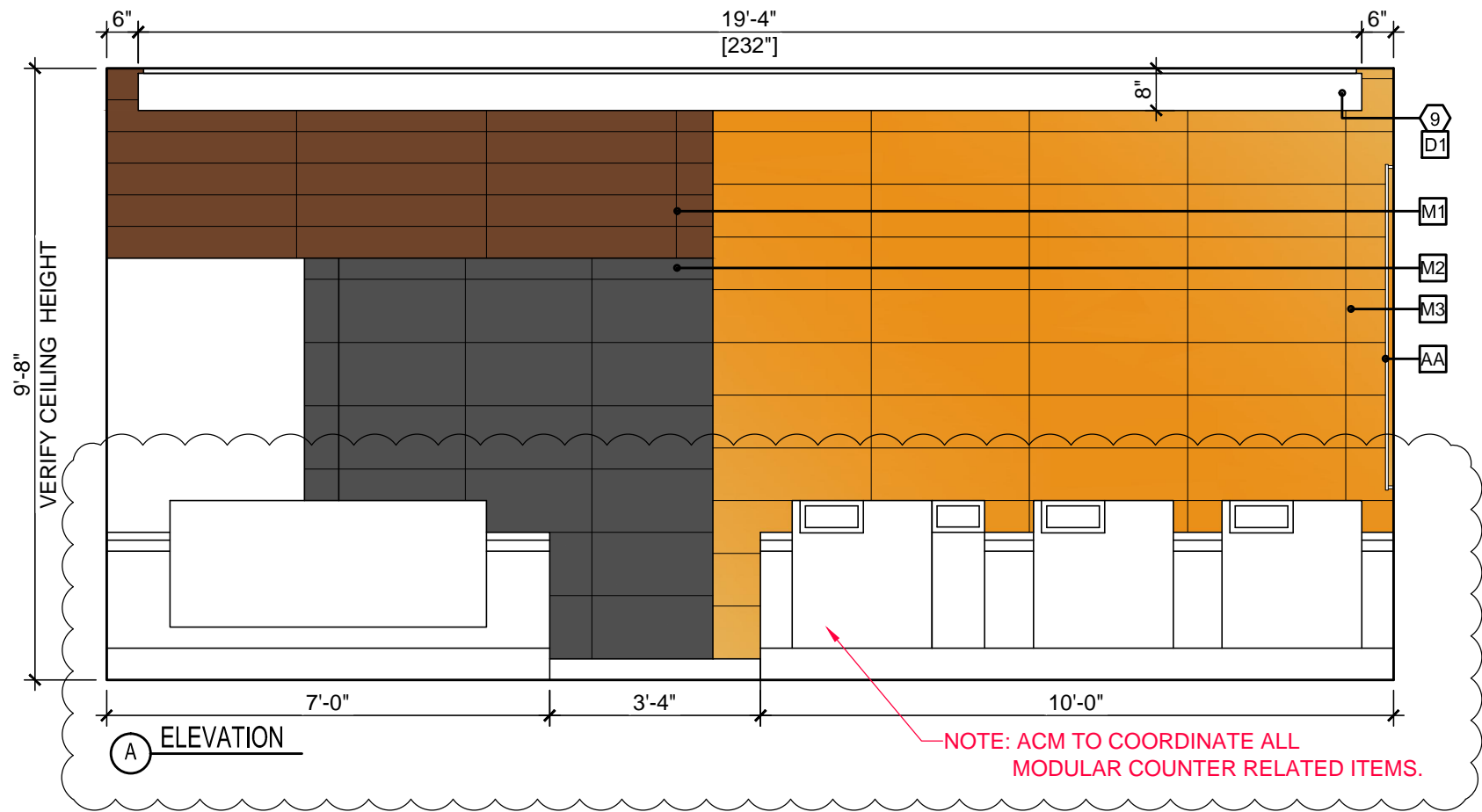


**9 D1 CLOUD SOFFIT DETAIL**





Y:\P-2014\McDonald's\P-McD10651\Design\2 Rev A\IP-McD10651-Rev A.dwg, 5a, 9/24/2014 6:22:54 PM, gmund



2650 El Presidio Street  
Long Beach, CA 90810  
T 1 310 537 8200  
F 1 310 604 3827  
www.jbi-interiors.com

#### REVISIONS

LTR	DATE	BY	CHK'D
-----	------	----	-------

A	09-24-14	gm	
---	----------	----	--

REVISED PER WRF DATED 09-11-14



BUILDING TYPE: -

STORE NUMBER: 36839

WINCHESTER  
ROAD  
MEMPHIS,  
TENNESSEE

#### ELEVATIONS

DATE: 08-26-14

SCALE: 3/8"=1'-0"

DESIGNER: gm

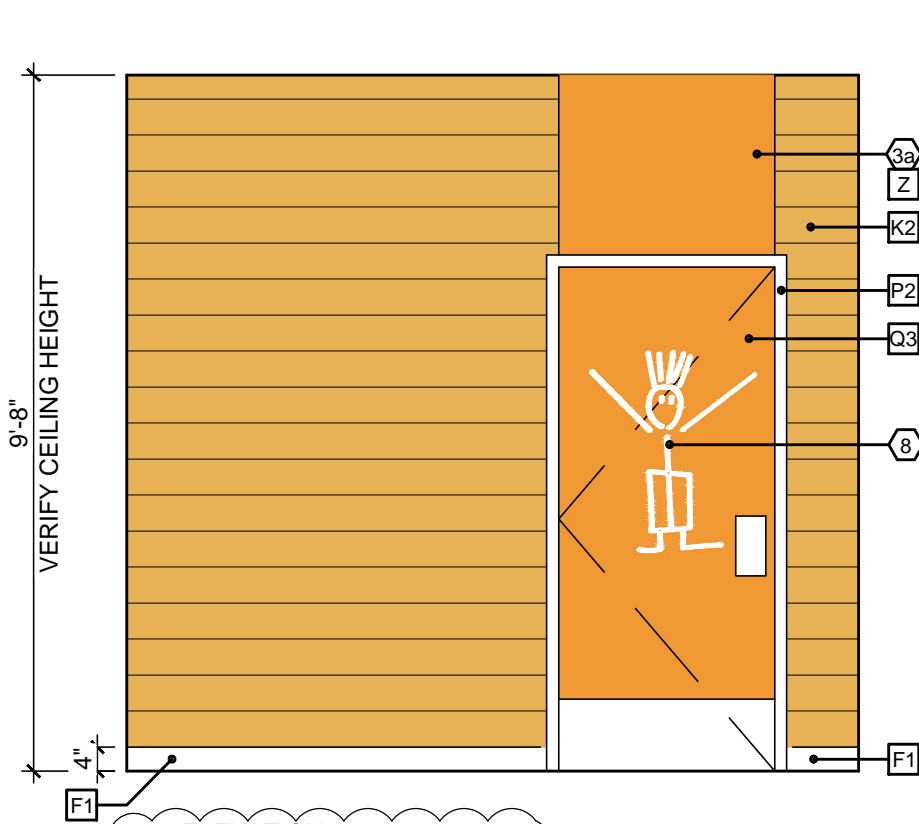
CHK'D:

DRAWING NUMBER

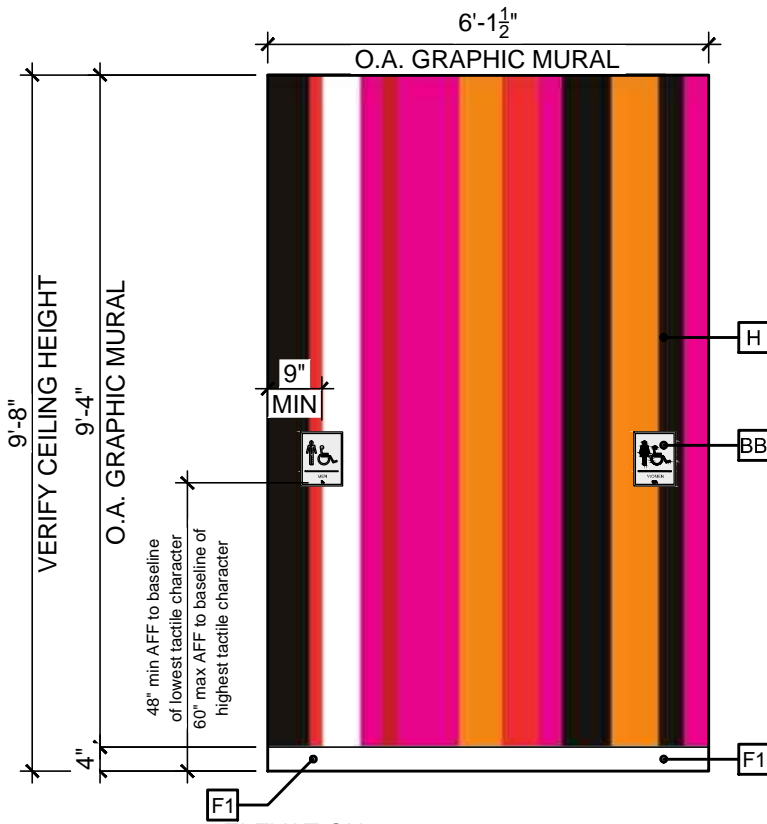
PAGE

P-McD10651 5a

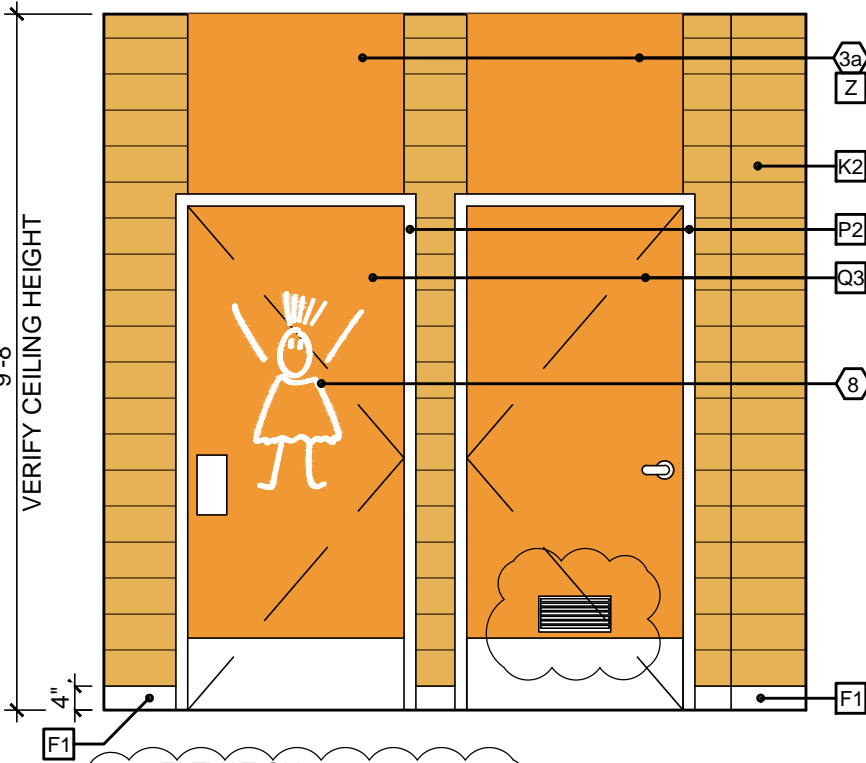
Y:\P-2014\McDonald's\P-McD10651-Rev A.dwg, 5b, 9/24/2014 6:22:56 PM, gmundo



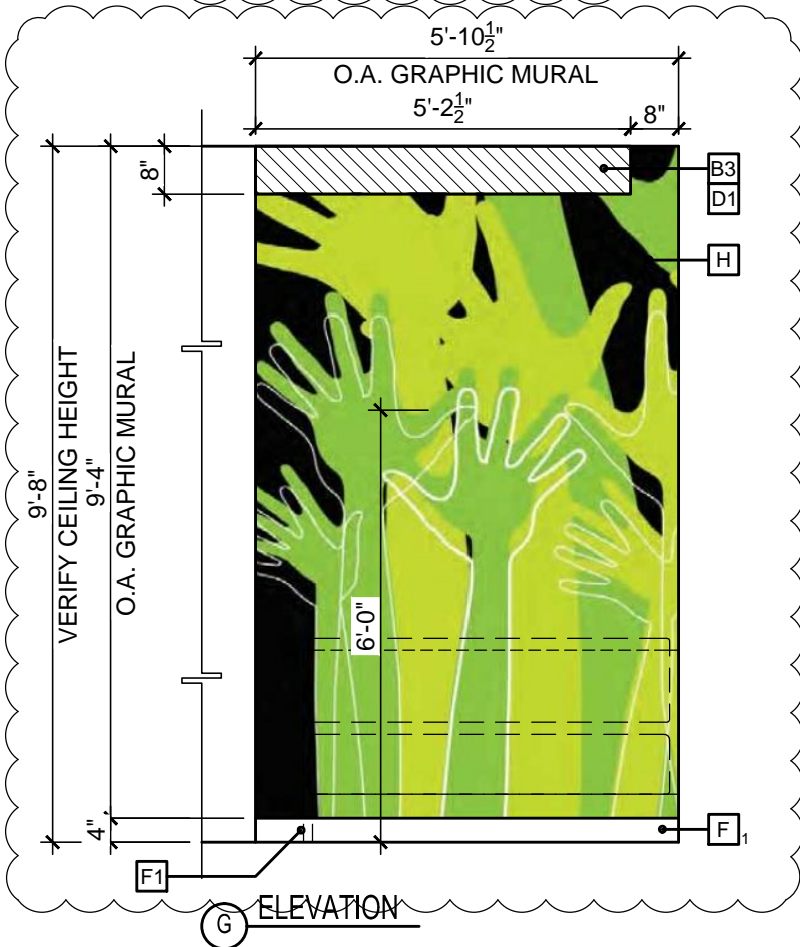
**D ELEVATION**  
NOTE: DOORS TO BE LAMINATED ON ALL 6 SIDES



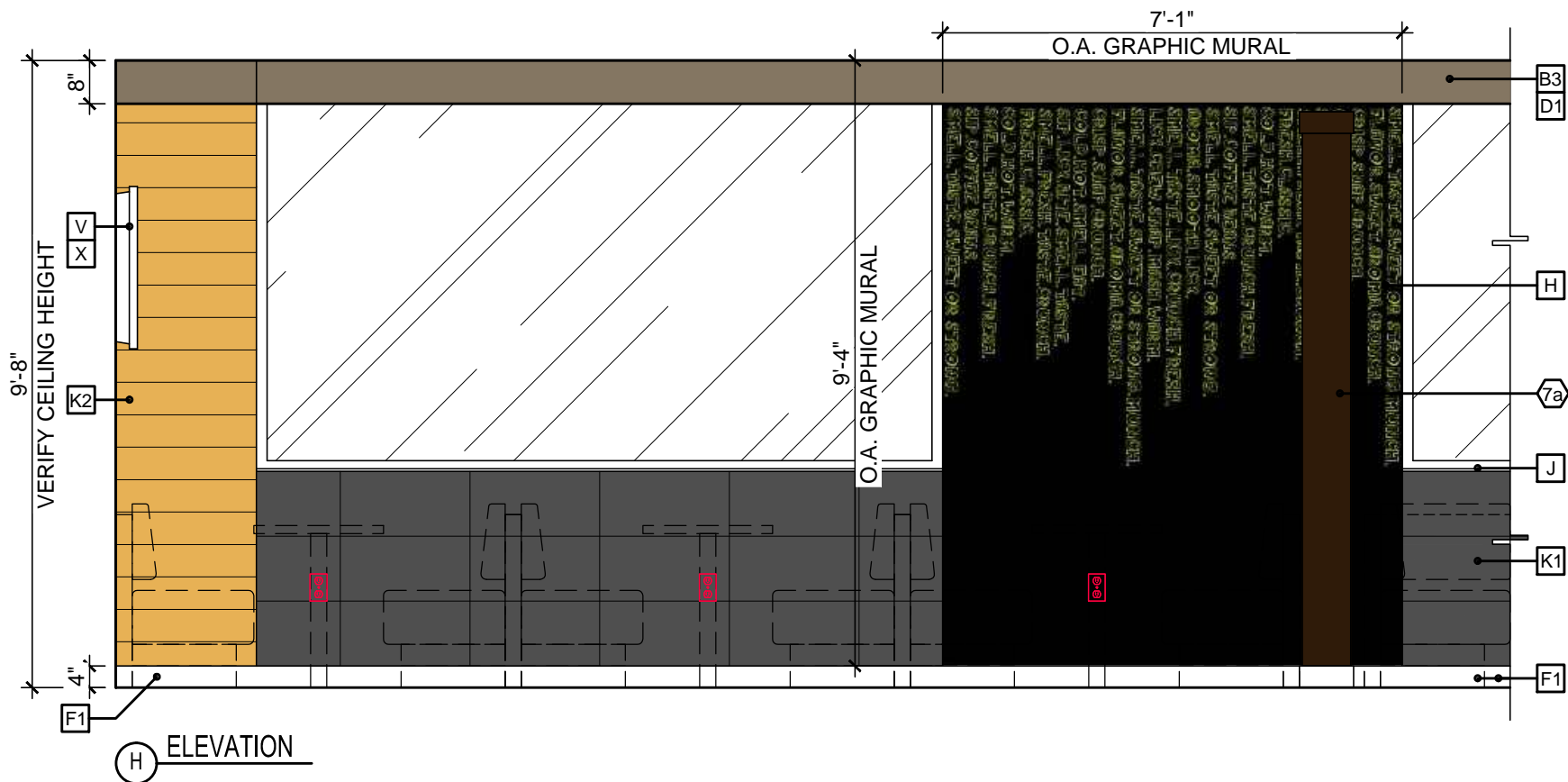
**E ELEVATION**



**F ELEVATION**  
NOTE: DOORS TO BE LAMINATED ON ALL 6 SIDES



**G ELEVATION**



**H ELEVATION**



2650 El Presidio Street  
Long Beach, CA 90810  
T 1 310 537 8200  
F 1 310 604 3827  
www.jbi-interiors.com

#### REVISIONS

LTR	DATE	BY	CHK'D
-----	------	----	-------

A	09-24-14	gm	
---	----------	----	--

REVISED PER WRF DATED 09-11-14



ALLEGRO VIVID  
CORE

BUILDING TYPE: -

STORE NUMBER: 36839

WINCHESTER  
ROAD  
MEMPHIS,  
TENNESSEE

#### ELEVATIONS

DATE: 08-26-14

SCALE: 3/8"=1'-0"

DESIGNER: gm

CHK'D:

DRAWING NUMBER

PAGE

**P-McD10651**

**5b**

2650 El Presidio Street  
Long Beach, CA 90810  
T 1 310 537 8200  
F 1 310 604 3827  
[www.jbi-interiors.com](http://www.jbi-interiors.com)

## REVISIONS

LTR	DATE	BY	CHK'D
A	09-24-14	gm	

REVISED PER WRF DATED 09-11-14




## ALLEGRO VIVID CORE

BUILDING TYPE: -

STORE NUMBER: 36839

WINCHESTER  
ROAD  
**MEMPHIS,  
TENNESSEE**

## ELEVATIONS

DATE: 08-26-14

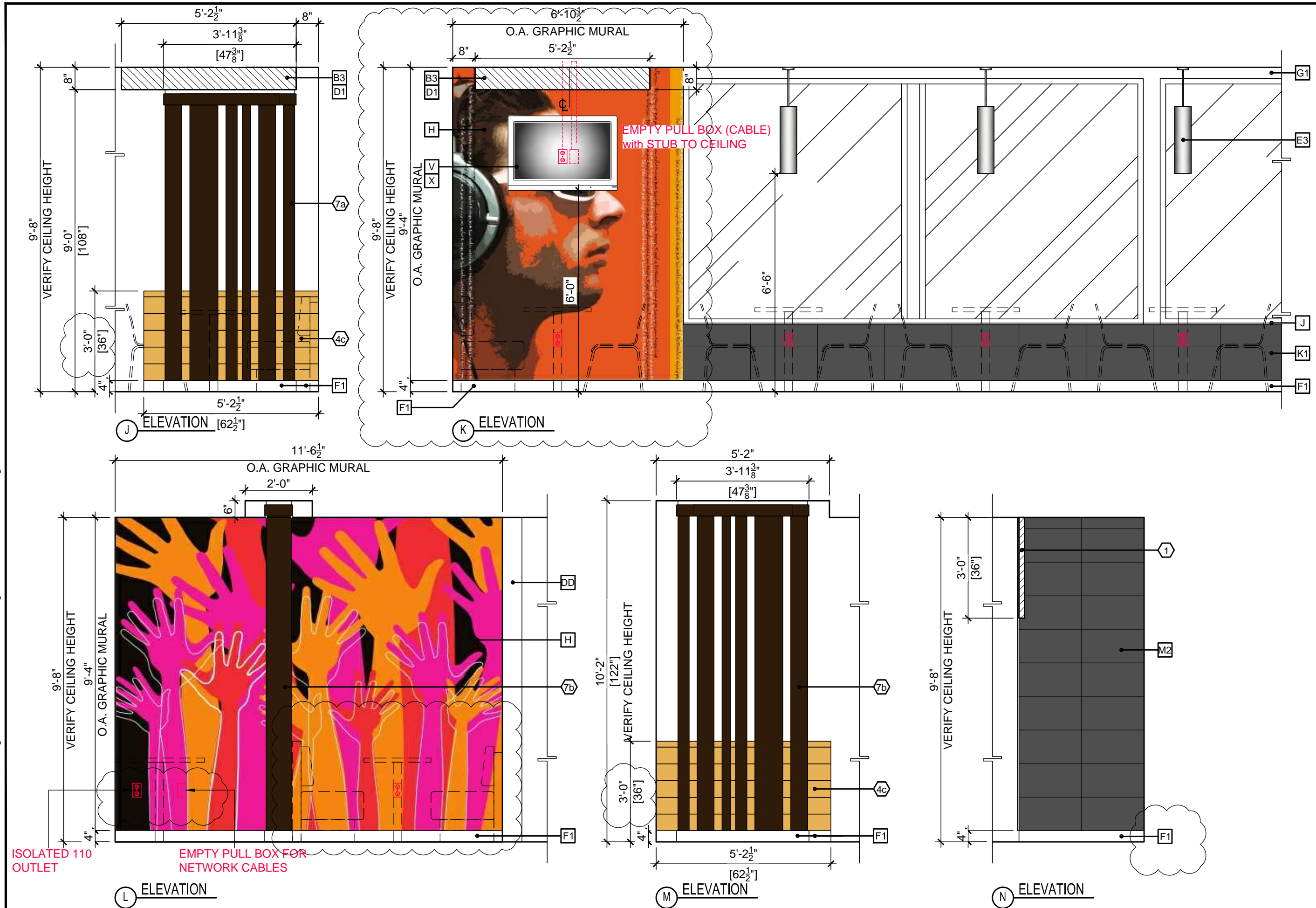
SCALE: 3/8"=1'-0"

DESIGNER: gm

CHK'D:

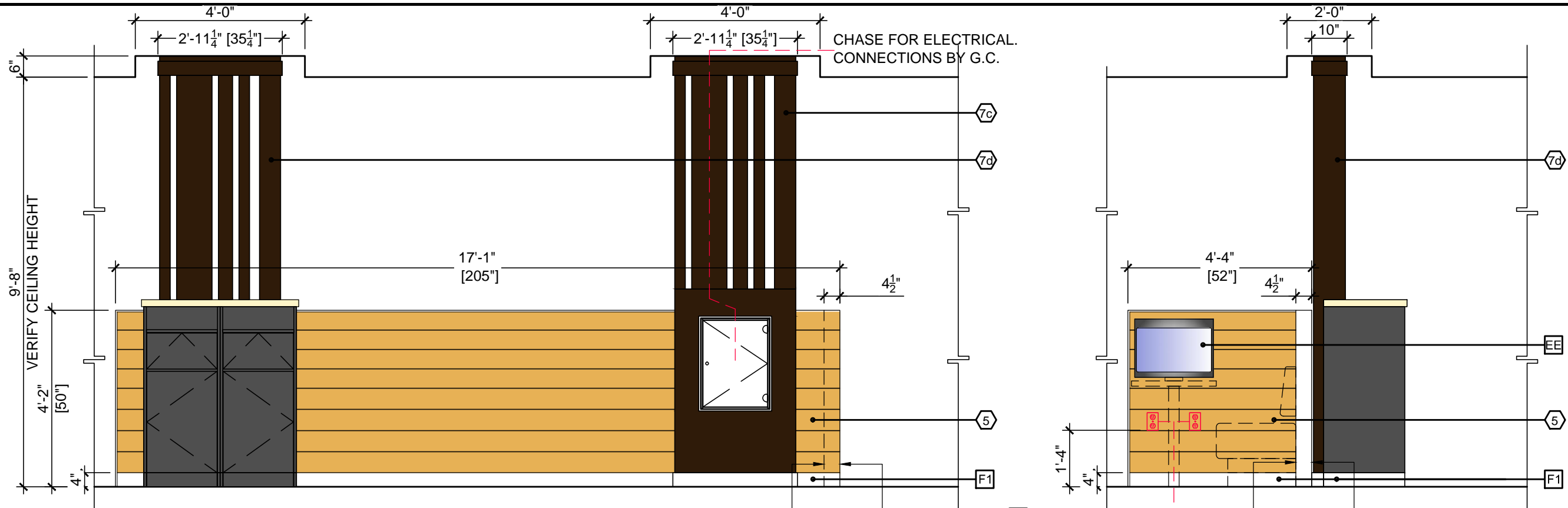
**P-McD10651**

5c



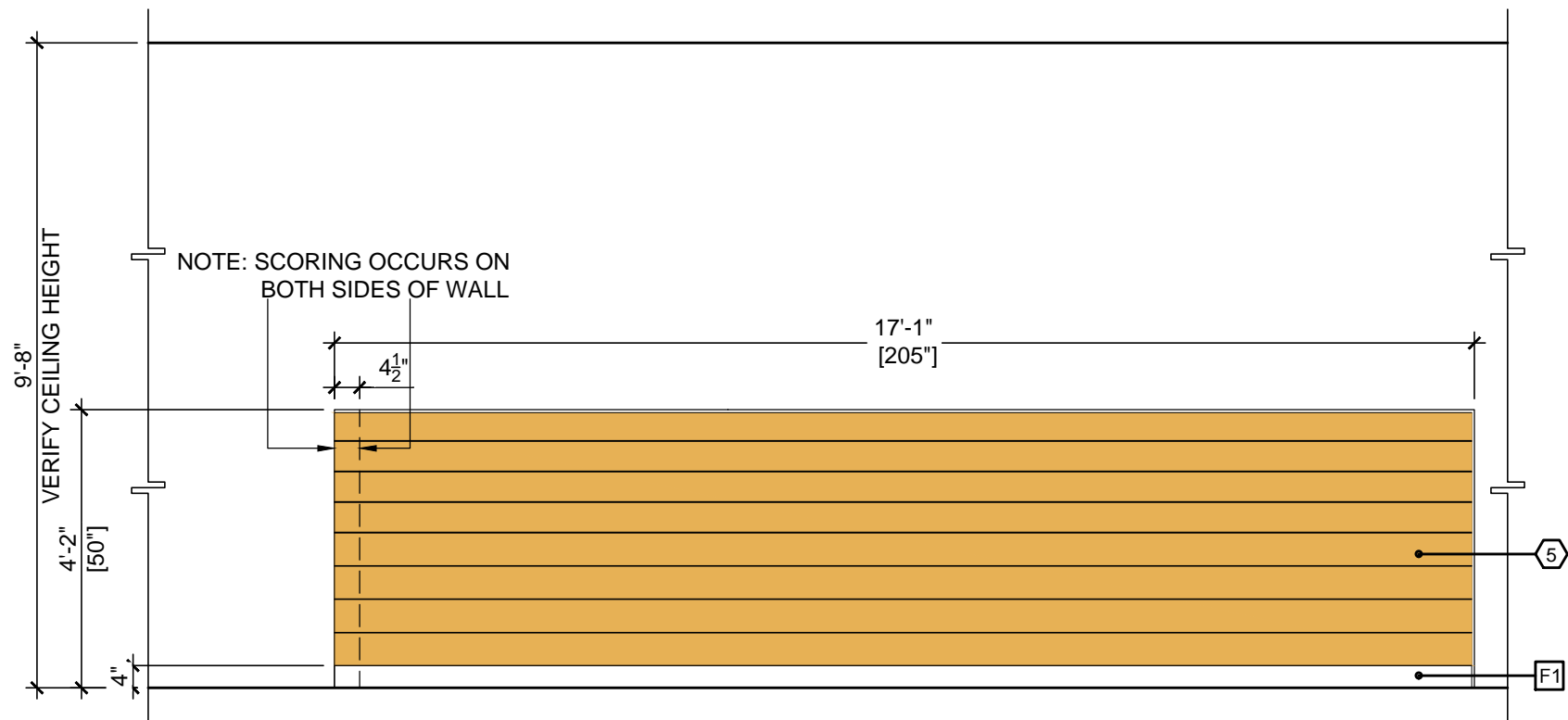


Y:\P-2014\McDonald's\P-McD10651-Rev A.dwg, 5d, 9/24/2014 6:23:01 PM, gmund

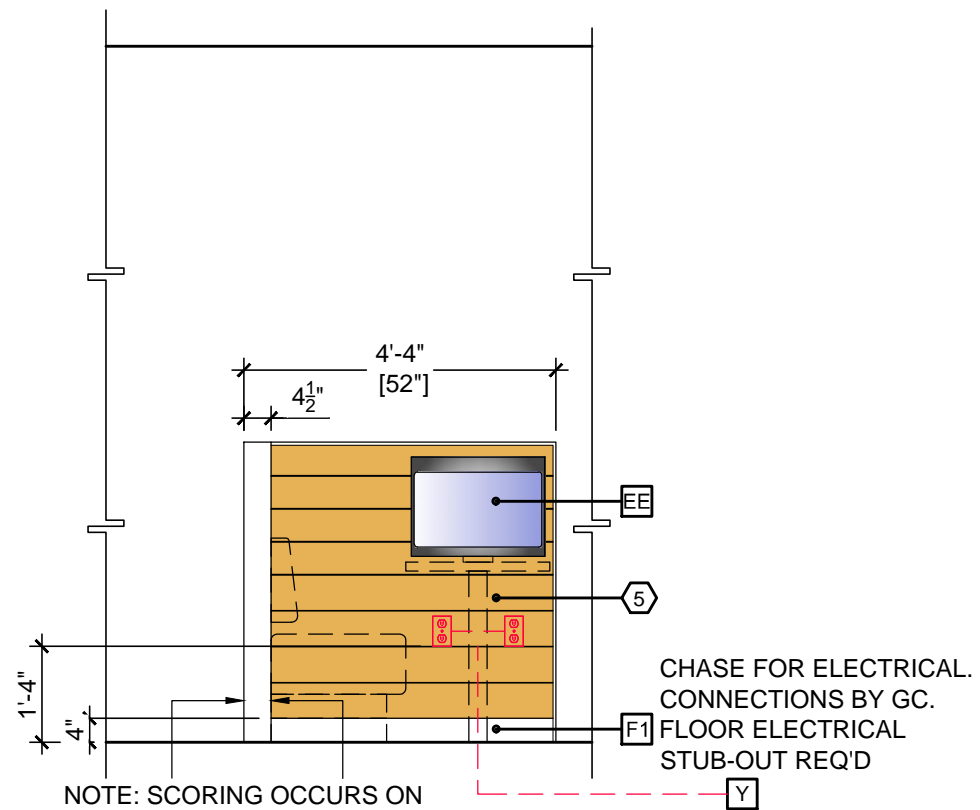


P ELEVATION

Q ELEVATION  
TABLE MOUNTED GAME BY O/O.  
GC TO COORDINATE ELECTRICAL ON SITE.



R ELEVATION



S ELEVATION



2650 El Presidio Street  
Long Beach, CA 90810  
T 1 310 537 8200  
F 1 310 604 3827  
www.jbi-interiors.com

#### REVISIONS

LTR	DATE	BY	CHK'D
-----	------	----	-------

--	--	--	--

--	--	--	--

--	--	--	--

--	--	--	--

--	--	--	--

--	--	--	--

--	--	--	--

--	--	--	--

--	--	--	--

--	--	--	--

--	--	--	--

--	--	--	--

--	--	--	--

--	--	--	--

--	--	--	--

--	--	--	--

--	--	--	--

--	--	--	--

--	--	--	--

--	--	--	--

--	--	--	--

--	--	--	--

--	--	--	--

--	--	--	--

--	--	--	--

--	--	--	--

--	--	--	--

--	--	--	--

--	--	--	--

--	--	--	--

--	--	--	--

--	--	--	--

--	--	--	--

--	--	--	--

--	--	--	--

--	--	--	--

--	--	--	--

--	--	--	--

--	--	--	--

--	--	--	--

--	--	--	--

--	--	--	--

--	--	--	--

--	--	--	--

--	--	--	--

--	--	--	--

--	--	--	--

2650 El Presidio Street  
Long Beach, CA 90810  
T 1 310 537 8200  
F 1 310 604 3827  
[www.jbi-interiors.com](http://www.jbi-interiors.com)

## REVISIONS

[illegible]

## ALLEGRO VIVID CORE

BUILDING TYPE: -

STORE NUMBER: 36839

WINCHESTER  
ROAD  
**MEMPHIS,  
TENNESSEE**

## ELEVATIONS

DATE: 08-26-14

SCALE: 3/8"=1'-0"

DESIGNER: gm

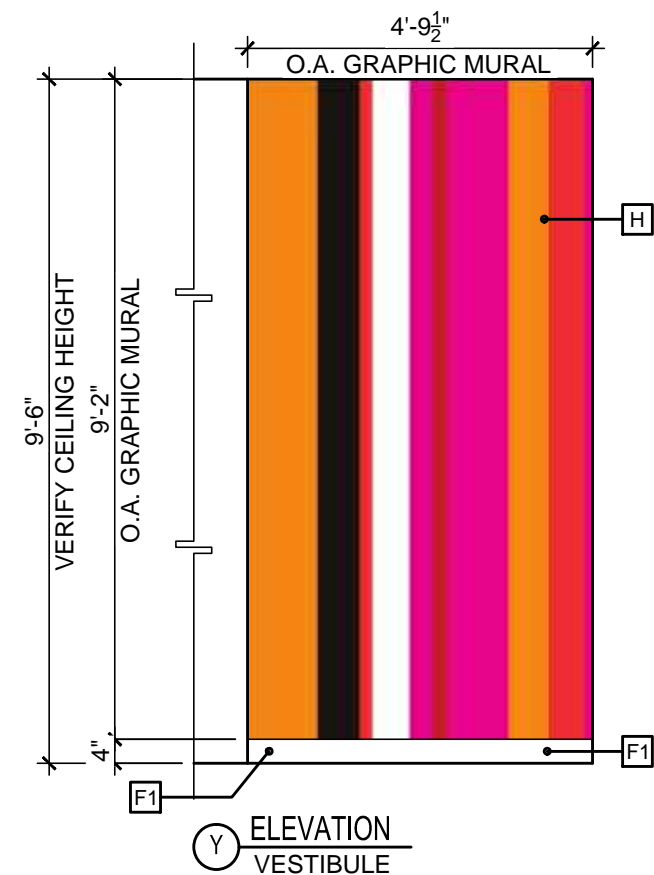
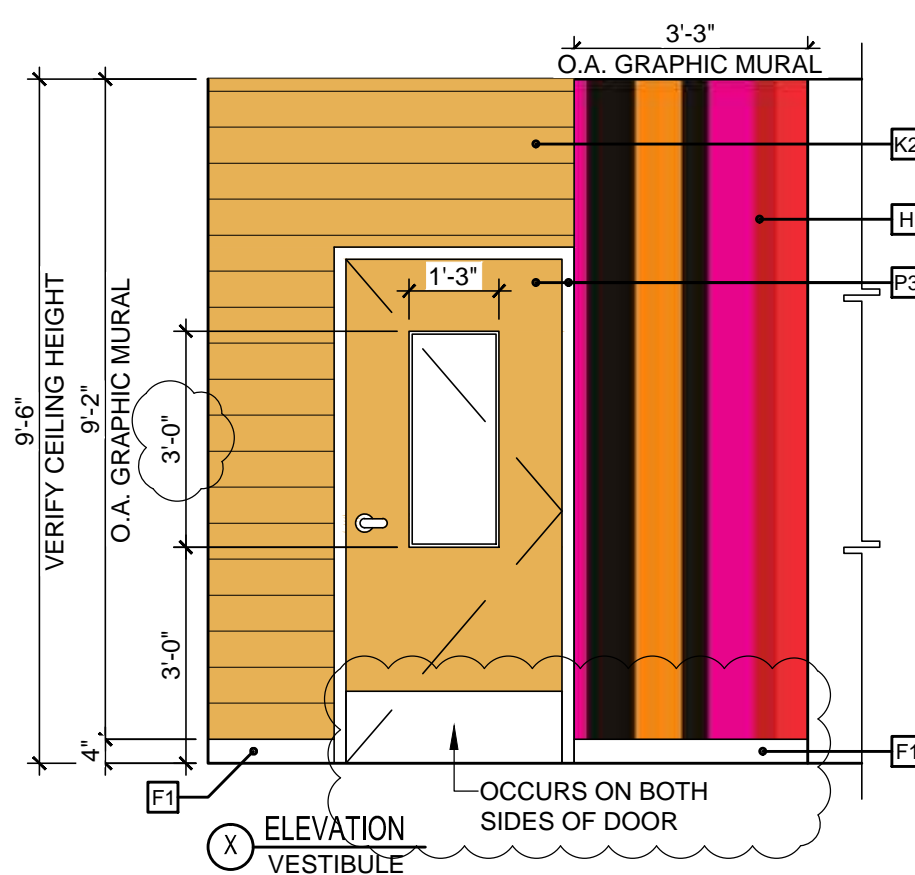
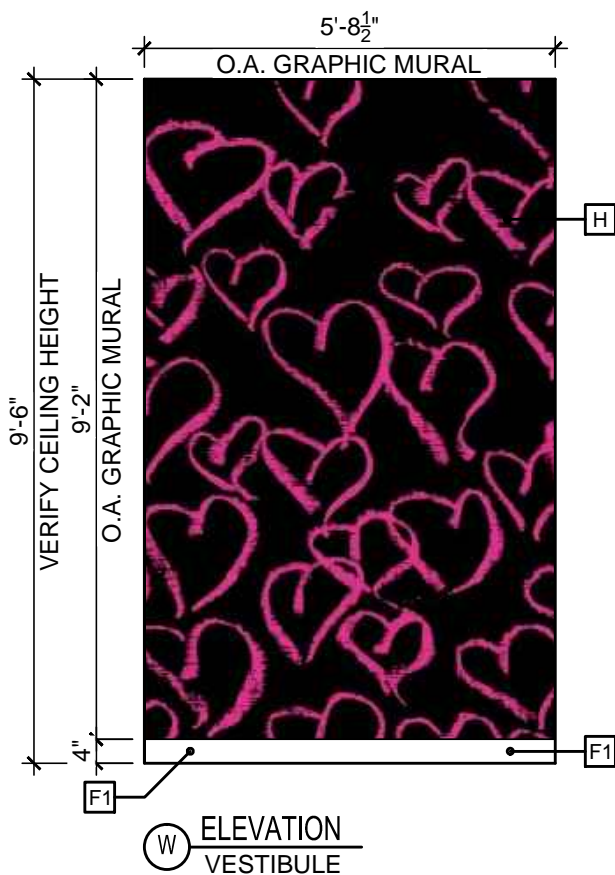
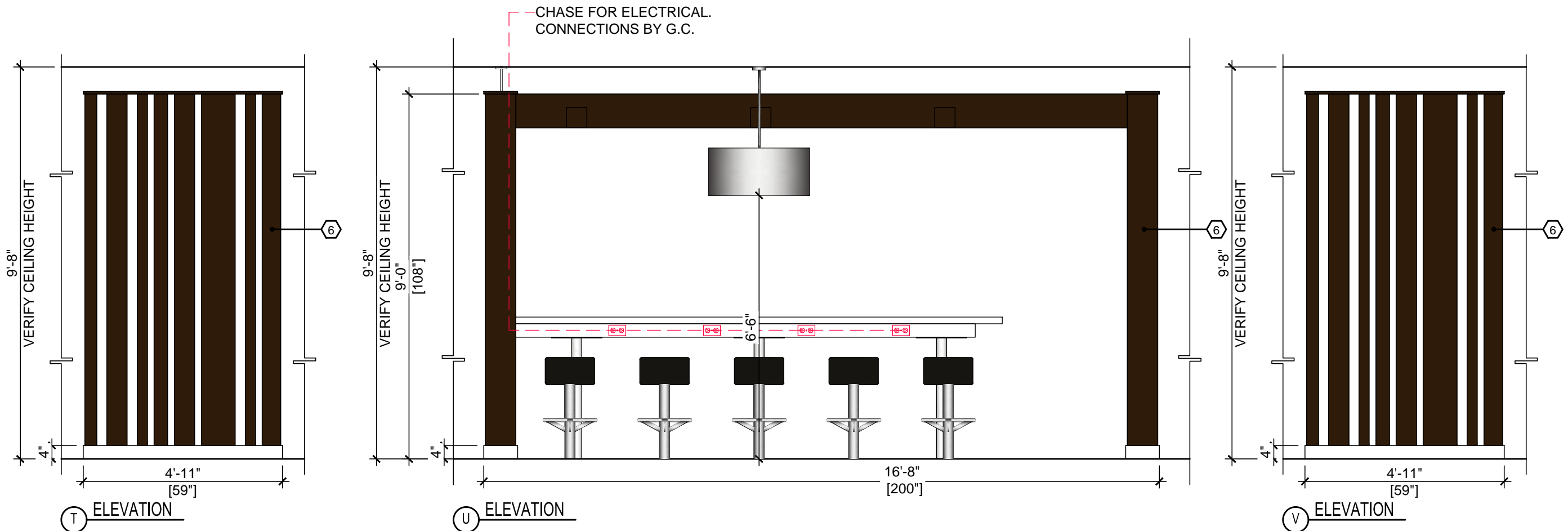
K'D:

DRAWING NUMBER	
----------------	--

PAGE

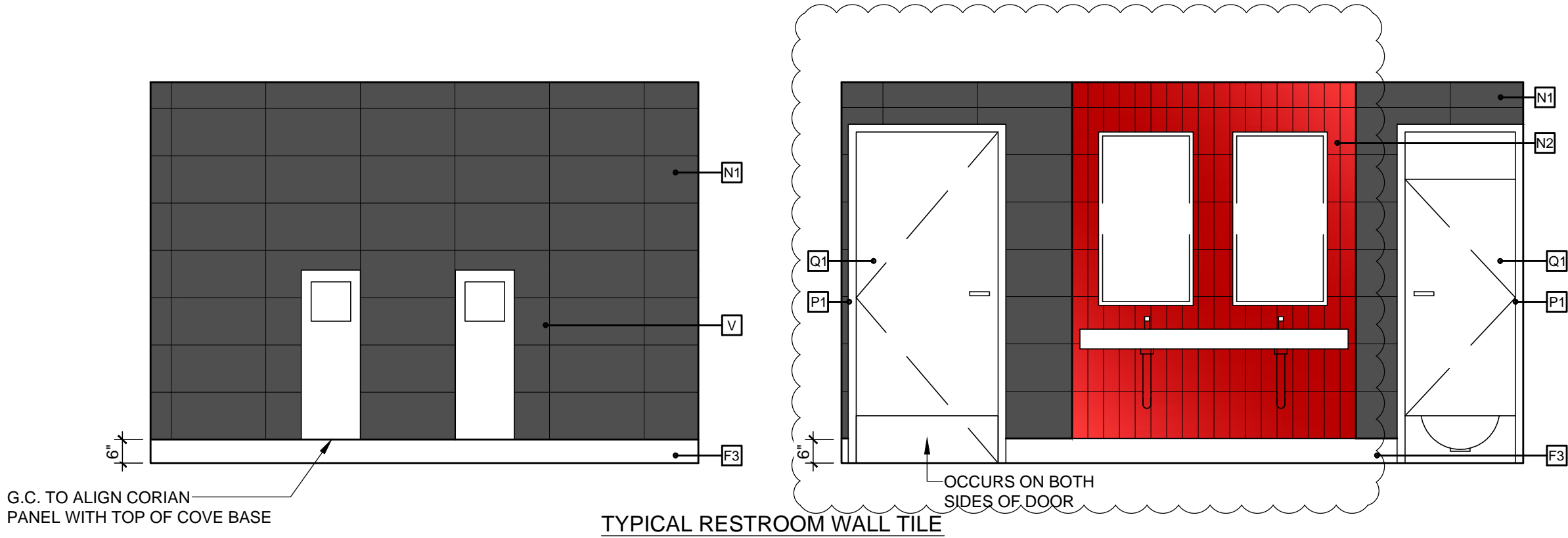
**P-McD10651**

be



5f

Y:\P-2014\McDonald's\P-McD10651\Design\2 Rev A\IP-McD10651-Rev A.dwg, 5g, 9/24/2014 6:23:08 PM, gmundo



2650 El Presidio Street  
Long Beach, CA 90810  
T 1 310 537 8200  
F 1 310 604 3827  
www.jbi-interiors.com

REVISIONS

LTR	DATE	BY	CHK'D
A	09-24-14	gm	
REVISED PER WRF DATED 09-11-14			



BUILDING TYPE:	-
STORE NUMBER:	36839

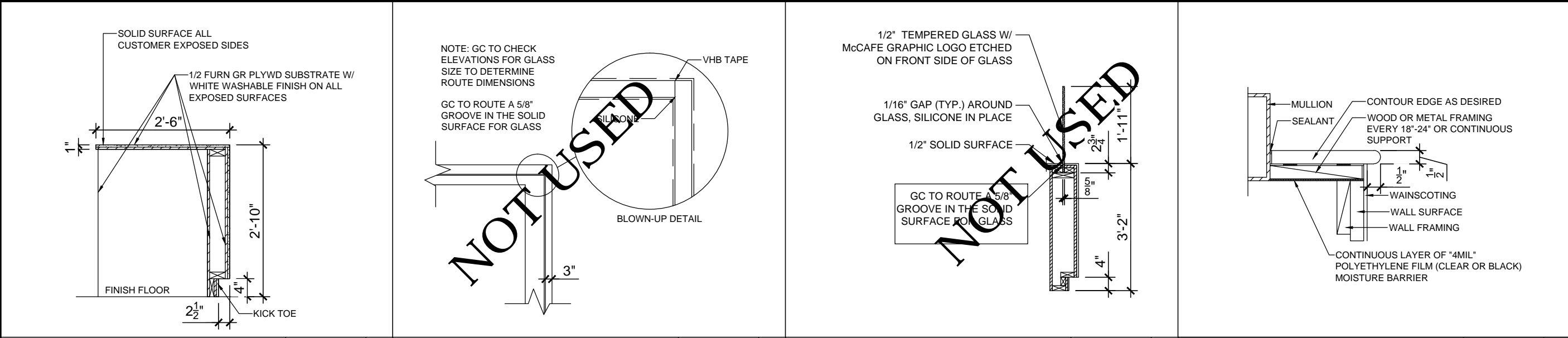
WINCHESTER  
ROAD  
MEMPHIS,  
TENNESSEE

ELEVATIONS

DATE: 08-26-14	
SCALE: 3/8"=1'-0"	
DESIGNER: gm	CHK'D:
DRAWING NUMBER	PAGE
P-McD10651	5g



Y:\P-2014\McDonald's\P-McD10651\Design\2 Rev A\IP-McD10651-Rev A.dwg, 6, 9/24/2014 6:23:14 PM, gmund





ITEMS BY JBI	
--------------	--



LTR	DATE	BY	CHK'D
-----	------	----	-------

[illegible]

BUILDING TYPE: -

STORE NUMBER: 36839

WINCHESTER  
ROAD  
**MEMPHIS,  
TENNESSEE**

## JB1 LEGEND

DATE: 08-26-14

SCALE: NTS

DESIGNER: gm      CHK'D:

DRAWING NUMBER	PAGE
----------------	------

**P-McD10651** | 8a

Quantity	JB I Type Mark	Product Group	PRODUCT NAME	Color / Finish Code(s)	Finishes	McD SKU#	Comments	Standard / Variable / Plus Up / Custom
Seating - Chairs & Stools								
31	CH	Chairs and Stools	Bent Plywood Chair	LM02 MT05	Seat: Wilsonart 7943-38 Colombian Walnut Frame: Chrome	CH-100-003		Standard
6	CC	Chairs and Stools	Café Chair	U03 MT05	Seat: Evolve U3 Cayenne Frame: Chrome	US-110-U03		Standard
14	BS	Chairs and Stools	Button Stool	U17 MT02	Evolve U17 Lime Base: TCI 9911-01007-1 Nearly Chrome	US-160-U17		Standard
10	BHDS	Chairs and Stools	Drum Stool	U29	Evolve U29 Licorice	US-191-U29		Standard
Seating - Banquettes								
1	RBLB24	Banquettes	Roscoe Banquette, 24"	U28 LM01 MT07 TL24	Back & Seat: Evolve U28 Peppercorn Plinth: Arborite W450CA Rift Golden Oak Corner Guards: Aluminum Comer Bead Base: Tile by GC	BS-100-24S-0132		Standard
7	RBLB42	Banquettes	Roscoe Banquette, 42"	U28 LM01 MT07 TL24	Back & Seat: Evolve U28 Peppercorn Plinth: Arborite W450CA Rift Golden Oak Corner Guards: Aluminum Comer Bead Base: Tile by GC	BS-100-42S-0132		Standard
3	RBLB54	Banquettes	Roscoe Banquette, 54"	U28 LM01 MT07 TL24	Back & Seat: Evolve U28 Peppercorn Plinth: Arborite W450CA Rift Golden Oak Corner Guards: Aluminum Comer Bead Base: Tile by GC	BS-100-54S-0132		Standard
11	RBLB60	Banquettes	Roscoe Banquette, 60"	U28 LM01 MT07 TL24	Back & Seat: Evolve U28 Peppercorn Plinth: Arborite W450CA Rift Golden Oak Corner Guards: Aluminum Comer Bead Base: Tile by GC	BS-100-60S-0132		Standard
1	RBLBCS	Banquettes	Roscoe Banquette, Square Corner	U28 LM01 MT07 TL24	Back & Seat: Evolve U28 Peppercorn Plinth: Arborite W450CA Rift Golden Oak Corner Guards: Aluminum Comer Bead Base: Tile by GC	BS-100-CRN-0132		Standard
1	LBAS24	Banquettes	Lincoln Attached Back Banquette Single, 24"	U01 U28 MT04	Back: Evolve U01 Paprika Seat: Evolve U28 Peppercorn Frame: 304 Stainless Steel		Located in Crew Room	Custom
1	LBAS54	Banquettes	Lincoln Attached Back Banquette Single, 54"	U01 U28 MT04	Back: Evolve U01 Paprika Seat: Evolve U28 Peppercorn Frame: 304 Stainless Steel		Located in Crew Room	Custom
1	LBACS	Banquettes	Lincoln Attached Back Banquette Single, Corner	U01 U28 MT04	Back: Evolve U01 Paprika Seat: Evolve U28 Peppercorn Frame: 304 Stainless Steel		Located in Crew Room	Custom
11		Banquettes	Roscoe Plinth Filler Panel	LM01	Plinth: Arborite W450CA Rift Golden Oak	BS-100-FP-LM01		Standard
Seating - Table Tops								
2	TT2420-SS	Tables and Counters	Table, 24x20, eased corner	SS01	Corian, Canvas	TT-101-2420-SS01		Standard
6	TT2442-SS	Tables and Counters	Table, 24x42, eased corner	SS01	Corian, Canvas	TT-101-2442-SS01		Standard
1	TT2442-SS	Tables and Counters	Table, 24x42 ADA, eased corner	SS01	Corian, Canvas	TT-101-2442a-SS01		Standard
4	TT2460-SS	Tables and Counters	Table, 24x60, eased corner	SS01	Corian, Canvas	TT-101-2460-SS01		Standard
1	TT3032-SS	Tables and Counters	Table, 30x32 ADA, eased corner	SS01	Corian, Canvas	TT-101-3032a-SS01		Standard
4	TT3060-SS	Tables and Counters	Table, 30x60, eased corner	SS01	Corian, Canvas	TT-101-3060-SS01		Standard
2	TT36-SS	Tables and Counters	Table, 36" dia	SS01	Corian, Canvas	TT-101-36d-SS01		Standard
1	TT36-SS	Tables and Counters	Table, 36" dia, ADA	SS01	Corian, Canvas	TT-101-36da-SS01		Standard
6	TT2420-LA	Tables and Counters	Table, 24x20, eased corner	LM02 EB01	Wilsonart 7943-38 Colombian Walnut Edge: Rehau 309423-014/592E (Doellken Multiplex match)	TT-501-2420-LM02		Standard
4	TT2442-LA	Tables and Counters	Table, 24x42 ADA, eased corner	LM02 EB01	Wilsonart 7943-38 Colombian Walnut Edge: Rehau 309423-014/592E (Doellken Multiplex match)	TT-501-2442a-LM02		Standard
2	TT2420-LA	Tables and Counters	Table, 24x20, eased corner	LM20 EB01	Wilsonart 7952-38 Asian Sand Edge: Rehau 309423-014/592E (Doellken MultipleX match)	TT-501-2420-LM20	Located in Crew Room	Standard

Y:\P-2014\McDonald's\P-McD10651-Rev A.dwg, 8b, 9/24/2014 6:23:17 PM, gmund

ITEMS BY JBI

Quantity	JB I Type Mark	Product Group	PRODUCT NAME	Color / Finish Code(s)	Finishes	McD SKU#	Comments	Standard / Variable / Plus Up / Custom
Seating - Feature Tables & Counters								
1	SCT12	Feature Table	Sydney Communal Table - 36"W x 144"L	SS03	Top: Corian Serene Sage. 2" thick self-edge, eased edges		Non-Standard Electrical Power Supply Box included	Standard
Steel Supports								
24		Steel	Standard Table Steel, Standard Height	MT02	TCI 9911-01007-1 Nearly Chrome	ST-101-02		Standard
12		Steel	Large Table Steel, Cored, Offset (ADA), Standard Height	MT02	TCI 9911-01007-1 Nearly Chrome	ST-103-02	Column Only	Standard
3		Steel	Large Table Steel, Bar Height	MT02	TCI 9911-01007-1 Nearly Chrome		Non-Standard 5" x 15" Plate Core Drilled	Custom
10		Steel	Stool Steel, Bar Height, Footring	MT02/MT04	TCI 9911-01007-1 Nearly Chrome Stainless Steel	ST-701-04		Standard
2		Steel	Standard Table Steel, Freestanding, Standard Height Column	MT02	TCI 9911-01007-1 Nearly Chrome	ST-201-02	Column Only	Standard
2		Steel	Table Base, Freestanding, 22" x 22"	MT02	TCI 9911-01007-1 Nearly Chrome	ST-203-2222	Base Only	Standard
3		Steel	12" Wall Mounted Brackets/Cleats for Eating counter	MT03	TCI 9911-01007-1 Nearly Chrome		Wall brackets for eating couter	CUSTOM
2		Steel	18" Wall Mounted Brackets / Cleats for Eating counter	MT03	TCI 9911-01007-1 Nearly Chrome		Wall brackets for eating couter	CUSTOM
Waste Receptacles								
1	WRH2	Waste Receptacles	Hyde Waste Receptacle - Double	LM02 MT04 EB02 MT02	Unit: Wilsonart 7943-38 Colombian Walnut Tray slide: Stainless Steel Edge: Rehau Nubian Brown Base: TCI 9911-01007-1 Nearly Chrome	WR-401-D-LM02		Standard
1	WRPL	Waste Receptacles	Perth Low - Double (used only with Timbers in Form/Allegro)	LM03 SS02 LM04 EB03 TL24	Unit: Wilsonart D91-60 Slate Grey Top: Corian Linen Exposed Interior: Wilsonart 1595-60 Black Edge: Rehau Graphite Corner trim: 3/4"x3/4" 'Inside' angle Base: Tile by GC	WR-101-D-LM03		Standard
E-Learning Center								
1		Learning Counter with under desk storage	25x90, ADA		Formica 8842-WR Weathered Ash Self Edge Storage Base: Black Kydex		Located in Crew Room	Custom
1		Learning Counter	15x48		Formica 8842-WR Weathered Ash Self Edge		Located in Crew Room	Custom
1		Learning Cabinet	60"W x 18"H x 15"D		Main Finish: Formica 8842-WR Weathered Ash Accent Finish/Edge: Formica 6902-58 Grenadine Support: French Cleat		(3) Cubbies Located in Crew Room	Custom



2650 El Presidio Street  
Long Beach, CA 90810  
T 1 310 537 8200  
F 1 310 604 3827  
www.jbi-interiors.com

REVISIONS

LTR    DATE    BY    CHK'D




BUILDING TYPE:    -

STORE NUMBER:    36839

WINCHESTER  
ROAD  
MEMPHIS,  
TENNESSEE

JB I LEGEND

DATE:    08-26-14

SCALE:    NTS

DESIGNER:    gm    CHK'D:

DRAWING NUMBER    PAGE

P-McD10651    8b



Y:\P-2014\McDonald's\P-McD10651\Design\2 Rev A\P-McD10651-Rev A.dwg, 8c, 9/24/2014 6:23:18 PM, gmund

ITEMS BY JBI

Quantity	JBI Type Mark	Product Group	PRODUCT NAME	Color / Finish Code(s)	Finishes	McD SKU#	Comments	Standard / Variable / Plus Up / Custom
Décor - Walls & Partitions								
1	1	Décor	Refresh Header w/ Stationary Panel, 36"H	LM01 MT04	Top Trim and Unit: Arborite W450CA Rift Golden Oak Lettering: Metal: 304 Stainless Steel	BC-36s-LM01		Variable
1	2	Décor	Fast Forward McCafe Cell Signage	MT04	Lettering: 304 Stainless Steel	MS-201-03	Surface mounted to tile. To be centered horizontally on site.	Standard
3	3a	Décor	Transom Laminate Panel System	LM26	Formica 2013-58 Fiesta	WP-12-LM26	For Restroom and Mop Closet Doors	Standard
Omitted per Rev A	3b	Décor	Transom Laminate Panel System	LM03	Wilsonart D91-60 Slate Grey	WP-12-LM03	For Kitchen and Mop Closet Doors Only	Standard
5	4a-b	Décor	Half Wall, 32" H x 3" T	LM01 MT07 TL24	Arborite W450CA Rift Golden Oak Corner Guards: Aluminum Comer Bead Base: Tile by G.C.	DC-201-LM01	a) 4 @ 62 1/2" b) 1 L-shape	Variable
2	4c	Décor	Half Wall with Black Scorelines, 36" H x 3"T	LM01 MT07 TL24	Arborite W450CA Rift Golden Oak Scorelines: Black Corner Guards: Aluminum Comer Bead Base: Tile by G.C.	DC-201s-LM01		Variable
2	5	Décor	90° Half Wall with Corian Top Cap, 50"H x 4-1/2" T	LM01 SS01 MT07 MT01/MT04	Wall: W450CA Rift Golden Oak Scorelines: Black Top cap and Vertical Ends: Corian Canvas Corner Guards: Aluminum Comer Bead Base: Chemetal 927 Light Stainless Steel Aluminum with 1/2" Stainless Steel Corner Guards		[DC-203s-LM01] Note: Scoring occurs on both sides of wall Non-standard height. To include chase for electrical and duplex outlets	Custom
1	6	Partitions	Portico Partition, 10 Seat, 9'0" High	LM02 MT07 TL24 MT01/MT04	Timber: Wilsonart 7943-38 Colombian Walnut Corner Guard: Aluminum Comer Bead 6" LED recessed lights Base: Tile by GC		Non-standard size	Custom
2	7a-b	Partitions	Bundle Partition, 6 Bundles	LM02 MT07 TL24	Timber: Wilsonart 7943-38 Colombian Walnut Corner Guard: Aluminum Comer Bead Top Trim: Wilsonart 7943-38 Colombian Walnut Reveal: Wilsonart 7943-38 Colombian Walnut Base: Tile by GC	DC-620-6	a) 1 @ 108" H b) 1 @ 122" H	Variable
1	7c	Partitions	Bundle Partition with built in HM Display	LM02 MT07 TL22 LM03 L33	Timber: Wilsonart 7943-38 Colombian Walnut Corner Guard: Aluminum Comer Bead Top Trim: Wilsonart 7943-38 Colombian Walnut Reveal: Wilsonart 7943-38 Colombian Walnut Base: Tile by GC Happy Meal: Inside: Wilsonart D91-60 Slate Grey Extruded Aluminum Framing Clear Door: Tempered Glass Corners: Aluminum corner angles if needed Nora Lighting LED Puck light w/ transformer Dimensions 2 3/4" D X 1"H, Flush Mounted Part #: NMPK13LED42C Sits above wall base	DC-620H		Variable
1	7d	Partitions	Bundle Partition notched for Perth Low	LM02 MT07 TL24	Timber: Wilsonart 7943-38 Colombian Walnut Corner Guard: Aluminum Comer Bead Top Trim: Wilsonart 7943-38 Colombian Walnut Reveal: Wilsonart 7943-38 Colombian Walnut Base: Tile by GC	DC-620N		Variable
1	8	Décor	Restroom Door Decal - sold as one set (men-women)		White vinyl decal	MS-101-DC1		Standard



2650 El Presidio Street  
Long Beach, CA 90810  
T 1 310 537 8200  
F 1 310 604 3827  
www.jbi-interiors.com

REVISIONS

LTR	DATE	BY	CHK'D
A	09-24-14	gm	

REVISED PER WRF DATED 09-11-14




BUILDING TYPE: -

STORE NUMBER: 36839

WINCHESTER  
ROAD  
MEMPHIS,  
TENNESSEE

JBI LEGEND

DATE: 08-26-14

SCALE: NTS

DESIGNER: gm

CHK'D:

DRAWING NUMBER

PAGE

P-McD10651

8C



Y:\P-2014\McDonald's\P-McD10651\Design\2 Rev A\IP-McD10651-Rev A.dwg, 8d, 9/24/2014 6:23:18 PM, gmund

ITEMS BY JBI

Quantity	JBI Type Mark	Product Group	PRODUCT NAME	Color / Finish Code(s)	Finishes	McD SKU#	Comments	Standard / Variable / Plus Up / Custom
Décor - Ceiling Elements								
1	9	Ceiling Elements	Cloud Soffit, Black Reveal	LM06 LM04	Soffit: Wilsonart 1573-60 Frosty White Reveal: Wilsonart 1595-60 Black S&D to cut 6-1/4" holes for lighting, 6" Recessed LED lighting provided by GC	SC-100-LM06		Variable
1	10	Décor	"mcd standards" Pillar	LM03 MT07	1/2" MDF 3/8" Cork Painted #SW6629 Jalapeno (Satin) Laminted Band: Wilsonart D91-60 Slate Grey White Vinyl Lettering Corner guard: Aluminum comer bead		Located in Crew Room	Custom
1	11a	Décor	"people" RDM Tower		1/2" MDF Painted #SW6704 Hep Green (Satin) White Vinyl Lettering (4) Slots - Clear Document Holders		Located in Crew Room	Custom
1	11b	Décor	"guest services" RDM Tower		1/2" MDF Painted #SW6634 Copper Harbor (Satin) White Vinyl Lettering (4) Slots - Clear Document Holders		Located in Crew Room	Custom
1	11c	Décor	"kitchen" RDM Tower		1/2" MDF Painted #SW6767 Aquarium (Satin) White Vinyl Lettering (4) Slots - Clear Document Holders		Located in Crew Room	Custom
1	11d	Décor	"general manager" RDM Tower		1/2" MDF Painted #SW6676 Butterfield (Satin) White Vinyl Lettering (4) Slots - Clear Document Holders		Located in Crew Room	Custom
1	12	Décor	Privacy Panel		Base & Screen: Formica 6902-58 Grenadine		Located in Crew Room Freestanding, to be finished on all sides	Custom



2650 El Presidio Street  
Long Beach, CA 90810  
T 1 310 537 8200  
F 1 310 604 3827  
www.jbi-interiors.com

REVISIONS

LTR	DATE	BY	CHK'D



BUILDING TYPE: -	
STORE NUMBER: 36839	
WINCHESTER ROAD MEMPHIS, TENNESSEE	
JBI LEGEND	
DATE: 08-26-14	
SCALE: NTS	
DESIGNER: gm	CHK'D:
DRAWING NUMBER	PAGE
P-McD10651	8d

Y:\P-2014\McDonald's\P-McD10651\Design\2 Rev A\P-McD10651-Rev A.dwg, 9a, 9/24/2014 6:23:19 PM, gmundro

ITEMS BY GENERAL CONTRACTOR / OWNER

GC Type Mark	Type	Description	Product	Finish & Color	McD Finish Code	Manufacture	Contact Info	McD SKU#	Comments
Ceiling Finishes									
A	Acoustical Tile	CUSTOM Main Ceiling Tile/Grid	Cortega Lay-In	Tile: 24"x24"x5/8" Square Edge #770 Grid: 15/16" with all T-Bar, White Color: White		Armstrong	1-877-ARMSTONG		CUSTOM Owner keeps stock of this particular tile. HVAC, Speaker Covers and Diffusers to be painted PT46
B1	Paint	Ceiling Vents	AF-15	Steam	PT46	Benjamin Moore	<a href="http://www.benjamnmoore.com">http://www.benjamnmoore.com</a>		N/A
B2	Paint	All Restroom Ceilings	OC-27	Balboa Mist	PT02	Benjamin Moore	<a href="http://www.benjamnmoore.com">http://www.benjamnmoore.com</a>		N/A
B3	Paint	Painted Soffit color - Dining Room	SW 7642	Pavestone	PT01	Sherwin Williams	<a href="http://www.sherwin-williams.com">http://www.sherwin-williams.com</a>	SC-501-PT01	Dining Soffit; HVAC , Speaker Covers and Diffusers to be painted PT01
C	Ceiling Element	Gypsum Pocket	AF-15	Steam	PT46	Benjamin Moore	<a href="http://www.benjaminmoore.com">www.benjaminmoore.com</a>		
Lighting									
D1	Lighting	General Recessed Downlight	General Recessed Downlight, White Trim	6" LED downlight, 12.5 Watt, white trim SLS612W-GU24-SLS6C-1000	L01a	Security Lighting	Security Lighting Systems 800.544.4848	LI-120-L01a	N/A
D2	NOT USED	General Recessed Downlight	General Recessed Downlight, Anodized Trim	6" LED downlight, 12.5 Watt, anodized trim SLS612W-GU24-SLS6C-1000-A	L01a	Security Lighting	Security Lighting Systems 800.544.4848	LI-120-L01b	N/A
D3	NOT USED	SEEQ Area General Recessed Downlight	General Recessed Downlight, Black Trim	6" LED downlight, 12.5 Watt, flat black trim SLS612W-GU24-SLS6C-1000-BB	L02	Security Lighting	Security Lighting Systems 800.544.4848	LI-120-L02	N/A
D4	Lighting	Soffit Recessed Downlight, Single	SEEQ Area Recessed Downlight, Single	1 lamp recessed accent light with LED lamp, 15 Watts, GU24. MLLPAR71-TR2-B24-L	L03	Security Lighting	Security Lighting Systems 800.544.4848	LI-120-L03	N/A
D5	NOT USED	SEEQ Area Recessed Downlight, Double	SEEQ Area Recessed Downlight, Double	2 lamp recessed accent light with LED lamp, 15 Watts each, GU24. MLLPAR72-TR2-B24-L	L04	Security Lighting	Security Lighting Systems 800.544.4848	LI-120-L04	N/A
D6	Lighting	Wall Wash Recessed Downlight	Wall Wash Recessed Downlight	LED adjustable wall wash downlight, 12 Watt, white trim. SLS6112W-GU24-SLS6C-A500	L06	Security Lighting	Security Lighting Systems 800.544.4848	LI-120-L06	N/A
E1	Lighting	Pendant Light Large Drum Pendant	Drum Pendant - Large, White	Outside Shade: White Inside Shade: White Mounting and Suspension: Brushed Steel Part #: LDP-00-313CFL-BS	L05	Security Lighting	Security Lighting Systems 800.544.4848	LI-116-L05	N/A
E2	NOT USED	Pendant Light Medium Drum Pendant	Drum Pendant - Medium, White	Outside Shade: White Inside Shade: White Mounting and Suspension: Brushed Steel Part #: MDP-00-213CFL-BS	L22	Security Lighting	Security Lighting Systems 800.544.4848	LI-104-L22	N/A
E3	Lighting	Pendant Light Linear Tube Pendant	Tube Pendant	Outside Shade: Glossy White Cord and Canopy: White Part #: CCP-113CFL-WH-WTC	L11	Security Lighting	Security Lighting Systems 800.544.4848	LI-107-L11	N/A
Floor Finishes									
F1	Tile	Main Floor Tile	Structure	AV224 Timber 12"x24"	TL24	Crossville	Frank Galifianakis, 404.680.3691, e: fgalifianakis@crossvilleinc.com		Grout Joints as tight as possible, tile permitting. 1/8" maximum, 2 week lead-time. Field to be cut into 3 equal pieces to be utilized as 4" base tile. Grout Finish GT02
F2	Tile	Accent Floor Tile	E-Wood R11	E-Wood R11 - Oak 6"x36"	TL28	Eurowest	Charleen Keulian 800.978.7500 or Jan Deter 714.309.9551		Grout joints as tight as possible, tile permitting. 1/8" maximum, two week lead-time. SEEQ base tile to be 4"x36" (Cut). Grout Finish GT02
	Grout	Grout used with Floor Tile	Keracolor S 47	Charcoal	GT02	Mapei	Mapei 1.800.426.2734		N/A
F3	Tile	Cove Base Tile	Structure	AV224 Timber 6"x12"	TL24	Crossville	Frank Galifianakis, 404.680.3691, e: fgalifianakis@crossvilleinc.com		Grout Joints as tight as possible, tile permitting. 1/8" maximum, 2 week lead-time. Field to be cut into 3 equal pieces to be utilized as base tile. Grout Finish GT02
Wall Finishes									
G1	Wallcovering	Main Dining Room Wallcovering, used in conjunction with K2	Alpha 4601/4546	Charisma - Magnet	WC01	MDC	Mary Gwen Evans, 800.621.4006		G.C. to take into consideration the additional lead time and cost incurred when ordering Microvented wallcovering. G.C. to install corner guards on all exposed corners. ReCore, may require additional setup fees / lead times. Allow for additional costs/ lead times, use adequate adhesive.
G2	Wallcovering	Crew Room Wallcovering		Zingana - Yellowheart		DL Couch	800.433.0790		G.C. to take into consideration the additional lead time and cost incurred when ordering Microvented wallcovering. G.C. to install corner guards on all exposed corners. ReCore, may require additional setup fees / lead times. Allow for additional costs/ lead times, use adequate adhesive.
H	Wall Graphics	Dining Area/Restroom/Crew Room Graphic Murals	See Plans	See Plans For Locations		GFX/ASA	GFX; Rick Formanski 800.603.8478 <a href="http://www.mcdonaldsdecor@gfx.com">www.mcdonaldsdecor@gfx.com</a> ASA; Ann Bowen 865.330.7337		Lead Time: 10 working days for Non-Microvented Graphics and 15 working days for Microvented graphics <b>AFTER</b> receipt of Verified Dimensions, Graphic Crop Guides and Purchase Order.
J	Solid Surface	Window Sills	Corian	Medea	SS09	Dupont - Corian	Local Distributor		N/A
K1	Tile	Wainscot / Accent Tile at Windows, used in conjunction with G1	MADE	Uni Nero 12"x24"	TL23	Eurowest	Charleen Keulian 800.978.7500 or Jan Deter 714.309.9551		Grout joint recommendation: 1/8" thick, 2 week lead time. Grout Finish GT02
K2	Tile	Wood Plank Wall Tile	Wood Oak Collection	Washed Oak 6"x24"	TL30	Eurowest	Charleen Keulian 800.978.7500 or Jan Deter 714.309.9551		Grout Joint Recommendation 1/8" thick. 2 week lead time. Grout Finish GT10



2650 El Presidio Street  
Long Beach, CA 90810  
T 1 310 537 8200  
F 1 310 604 3827  
[www.jbi-interiors.com](http://www.jbi-interiors.com)

REVISIONS

LTR    DATE    BY    CHK'D

A    09-24-14    gm   

REVISED PER WRF DATED 09-11-14



BUILDING TYPE:    -

STORE NUMBER:    36839

WINCHESTER  
ROAD  
MEMPHIS,  
TENNESSEE

GC LEGEND

DATE: 08-26-14

SCALE:    NTS

DESIGNER: gm    CHK'D:

DRAWING NUMBER    PAGE

P-McD10651    9a



Y:\P-2014\McDonald's\P-McD10651\Design\2 Rev A\IP-McD10651-Rev A.dwg, 9b, 9/24/2014 6:23:20 PM, gmund

ITEMS BY GENERAL CONTRACTOR / OWNER

GC Type Mark	Type	Description	Product	Finish & Color	McD Finish Code	Manufacture	Contact Info	McD SKU#	Com m ents
Wall Finishes									
L	Trim	Chair Rail / Graphic Trim	RONDEC-DB	Satin Anodized Aluminum	TR01	Schluter	Earl Maicus, 800.267.0817 Ext 3410		Chair rail, as required for walls with tile wainscot with wallcovering above.
M1	Tile	Fast Forward Wall Tile & Face/Underside of Menu Board Valance	Terrace	Espresso 6"x36"	TL31	Dal-Tile	Fred Davis, 972.423.5464, e: Fred.Davis@daltile.com		Grout Joint Recommendation 1/8" maximum. 2 week lead time. Grout Finish GT11
M2	Tile	SEEQ Center Island Wall & Beverage Center Side Walls	Architect	Factory 12"x24"	TL16	Eurowest	Charleen Keulian 800.978.7500 or Jan Deter 714.309.9551		Grout Joint Recommendation 1/8" thick. 2 week lead time. Grout Finish GT02
M3	Tile	SEEQ Accent Wall & Beverage Center Wall	Feel	Orange - Taste 10"x30"	TL04	Eurowest	Charleen Keulian 800.978.7500 or Jan Deter 714.309.9551		Grout Joint Recommendation 1/8" thick. 2 week lead time. Grout Finish GT04
M4	Tile	Fast Forward Drivethru Runway Wall Tile	Lillis Collection	L001 - Gloss White 4"x16"		Dal-Tile	Fred Davis, 972.423.5464, e: Fred.Davis@daltile.com		Grout Joint Recommendation 1/8" thick. 2 week lead time. Grout Finish GT02
N1	Tile	Restrooms Walls	Architect	Factory 12"x24"	TL16	Eurowest	Charleen Keulian 800.978.7500 or Jan Deter 714.309.9551		Grout Joint Recommendation 1/8" thick. 2 week lead time. Grout Finish GT02
N2	Tile	Accent Restroom Walls	Feel	Red - Taste 4"x12"	TL05	Eurowest	Charleen Keulian 800.978.7500 or Jan Deter 714.309.9551		Tile To be installed vertically. Grout Joint Recommendation 1/8" thick. 2 week lead time. Grout Finish GT04
	Grout	Grout Used with Fast Forward Wall tile & Menu Board Wall tile	Keracolor S 79	Cocoa	GT11	Mapei	Mapei 1.800.426.2734		N/A
	Grout	Grout to be used with Beverage Walls, SEEQ Center Island Wall, & Fast Forward Kitchen tile	Keracolor S 47	Charcoal	GT02	Mapei	Mapei 1.800.426.2734		N/A
	Grout	Grout used with SEEQ Accent Wall & Accent Restroom Walls	Keracolor S 27	Silver	GT04	Mapei	Mapei 1.800.426.2734		N/A
	Grout	Grout Used with Wood Plank Wall Tile	Keracolor S 24	Summer Tan	GT10	Mapei	Mapei 1.800.426.2734		N/A
P1	Paint	Restroom Door interior and All Stall Door Jambs and Frames.	2134-30	Iron Mountain	PT06	Benjamin Moore	<a href="http://www.benjaminmoore.com">http://www.benjaminmoore.com</a>		N/A
P2	Paint	Exterior of Restroom Door Frames, Mop Closet Door Frames, Beverage Bar Bulkhead	1069	Twilight Gold	PT26	Benjamin Moore	<a href="http://www.benjaminmoore.com">http://www.benjaminmoore.com</a>		N/A
P3	Paint	Dining Room Side - Fast Forward Runway Door and Door Frame	1069	Twilight Gold	PT26	Benjamin Moore	<a href="http://www.benjaminmoore.com">http://www.benjaminmoore.com</a>		N/A
Q1	Laminate	All Restroom Stall Doors and Interior Side of Restroom Door.	863-58	Myriad Ribbonwood	LM11	Formica	Local Distributor		N/A
Q2	Omitted per Rev A	Kitchen and Mop Doors	D91-60	Slate Grey	LM03	Wilsonart	Local Distributor		G.C. to laminate both sides of door.
Q3	Laminate	Restroom Exterior Doors and Mop Closet Door	2013-58	Fiesta	LM26	Formica	Local Distributor		G.C. to laminate both sides of doors.
Miscellaneous Finishes									
R1	Solid Surface	Service Counter Top and Face	Corian	Linen	SS02	Dupont - Corian	Local Distributor		N/A
R2	Solid Surface	Dual Point Overshelf	Corian	Linen	SS02	Dupont - Corian	Local Distributor		N/A
S	Solid Surface	Beverage Center Top	Corian	Linen	SS02	Dupont - Corian	Local Distributor		N/A
T	Laminate	Beverage Center Unit Finish	W-450VL	Rift Golden Oak - run grain horizontally	LM01	Arborite	Local Distributor		N/A
U	Solid Surface	Restroom Sink/ Hand Dryer Panel	Corian	Rice Paper	SS04	Dupont - Corian	Local Distributor		N/A
V		Flat Panel TV	T.B.D.	To Be Determined by Owner Operator					N/A
W	Trim	Corner Tile Guard	RONDEC-AE	Satin Anodized Aluminum	TR03	Schluter	Earl Maicus, 800.267.0817 Ext 3410		N/A
X	Receptacle Wall Plates	Electrical Outlets	T.B.D.	Stainless Steel On Colored wall and White on white walls.					N/A
Y		Electrical Stub Out	T.B.D.	Floor electrical stub-out required for 90° Half Wall by JBI			By G.C.		See plans for location
Z		Wall Paneling				JBI	Eleanor T/F 310.667.5642 edeleon@jbi-interiors.com		G.C. to install Transom Panel to be provided by seating and Décor Company.
AA	Partitions	Alternate Interrupt Panel		Acrylic panel insert. 1" stand-offs, stainless steel.					To be provided by Owner/Operator
BB	Solid Surface	Restroom Signage	Corian	Nocturne		JBI	Eleanor T/F 310.667.5642 edeleon@jbi-interiors.com		ADA approved with Braille ( 1 ) Men - Square ( 1 ) Women - Square (1) Men / Women Restroom Sign (located outside of vestibule) Finish: Clear Acrylic with White Letters/Graphics
CC	Glass	Finishing Window	Skyline Glass	1/2" Tempered Bronze Tint Glass		Skyline Glass	Kelsey Lindsey, 773.782.3541		To be installed by GC
DD	Solid Surface	Transition Cap	Corian	Linen	SS02	Dupont - Corian	Local Distributor		1/2" Corian to overhang 1/4" on each end of finished wall. Note: The transition cap separates the tile finish on the service side from the regular dining room wall finishes on the opposite side.
EE	Touch Screen Games	Kidzpace Game	Touch to Play	Table mount		Kidzpace Interactive Inc	Don Butler T/F 716.225-5146		Color silver. GC is responsible for installation and all electrical connections
FF		Crew Room Furniture	T.B.D.	Lockers, Task Seating, and miscellaneous electronics by Owner Operator					N/A



2650 El Presidio Street  
Long Beach, CA 90810  
T 1 310 537 8200  
F 1 310 604 3827  
[www.jbi-interiors.com](http://www.jbi-interiors.com)

REVISIONS

LTR	DATE	BY	CHK'D
-----	------	----	-------

A	09-24-14	gm	
---	----------	----	--

REVISED PER WRF DATED 09-11-14

--	--	--	--

--	--	--	--

--	--	--	--

--	--	--	--

--	--	--	--

--	--	--	--

--	--	--	--

--	--	--	--

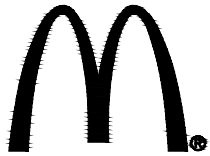
--	--	--	--

--	--	--	--

--	--	--	--

--	--	--	--

--	--	--	--



ALLEGRO VIVID  
CORE

BUILDING TYPE: -

STORE NUMBER: 36839

WINCHESTER  
ROAD  
MEMPHIS,  
TENNESSEE

GC LEGEND

DATE: 08-26-14

SCALE: NTS

DESIGNER: gm

CHK'D:

DRAWING NUMBER

PAGE

P-McD10651

9b